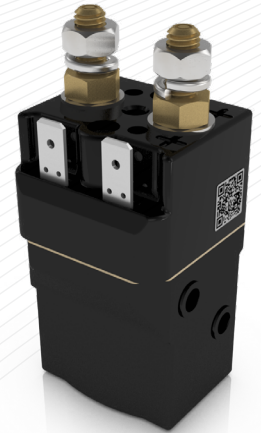


Application	Uninterrupted
Thermal Current Rating (¹ th)	80A
Intermittent Current Rating:	
30% Duty	145A
40% Duty	125A
50% Duty	115A
60% Duty	105A
70% Duty	95A
Rated Fault Current Breaking Capacity (¹ cn) 5ms Time Constant: (in accordance with UL583*)	
SW63	400A at 48V D.C.
SW63B	400A at 96V D.C.
Rated Fault Current Breaking Capacity (¹ cn) Resistive Load: (in accordance with UL508*)	
SW63	120A at 60V D.C.
SW63B	120A at 96V D.C.
Maximum Recommended Contact Voltages (U ₀):	
SW63	48V D.C. 60V D.C.
SW63B	96V D.C. 120V D.C.
Typical Voltage Drop per pole across New Contacts at 80A	40mV
Mechanical Durability	>3 x 10 ⁶ Cycles
Coil Voltage Available (U _c) (Rectifier board required for A.C.)	From 6 to 130V D.C.
Coil Power Dissipation:	
Highly Intermittent Rated Types	14 - 21 Watts
Intermittently Rated types	10 - 14 Watts
Prolonged Rated Types	7 - 10 Watts
Continuously Rated Types	5 - 7 Watts
Maximum Pull-In Voltage (Coil at 20° C) Guideline:	
Highly Intermittent Rated types (Max 25% Duty Cycle)	60% U _s
Intermittently Rated types (Max 70% Duty Cycle)	60% U _s
Prolonged Operation (Max 90% Duty Cycle)	60% U _s
Continuously Rated Types (100% Duty Cycle)	66% U _s
Drop-Out Voltage Range	10 - 25% U _s
Typical Pull-In Time	15ms
Typical Drop-Out Time (N/C Contacts to Close):	
Without Suppression	6ms
With Diode Suppression	35ms
With Diode and Resistor (Subject to resistance value)	8 - 20ms
Typical Contact Bounce Period	3ms
Operating Ambient Temperature	- 40° C to + 60° C
Guideline Contactor Weight:	
SW63	205 gms
With Auxiliary	+ 20 gms
With Blowouts	+ 8 gms
Auxiliary Details	
Auxiliary Thermal Current Rating	5A
Auxiliary Contact Switching Capabilities (Resistive Load):	
	5A at 24V D.C.
	1A at 60V D.C.
	0.5A at 120V D.C.
	0.25A at 240V D.C.
Advised Connection Sizes for Maximum Continuous Current	
Copper busbar	52mm ² [0.08inch ²]
Cable	Rated suitable for Application
Key: ▲ = Uninterrupted	
Note: Where applicable values shown are at 20° C	
* Please check our web site for product UL status	

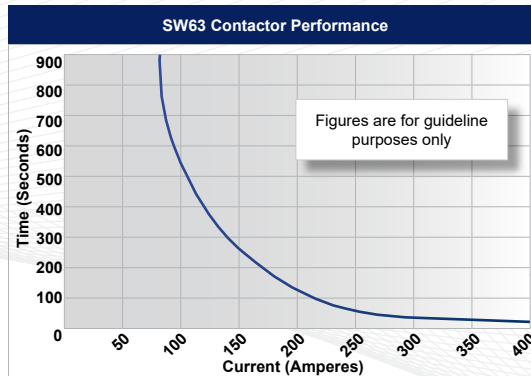
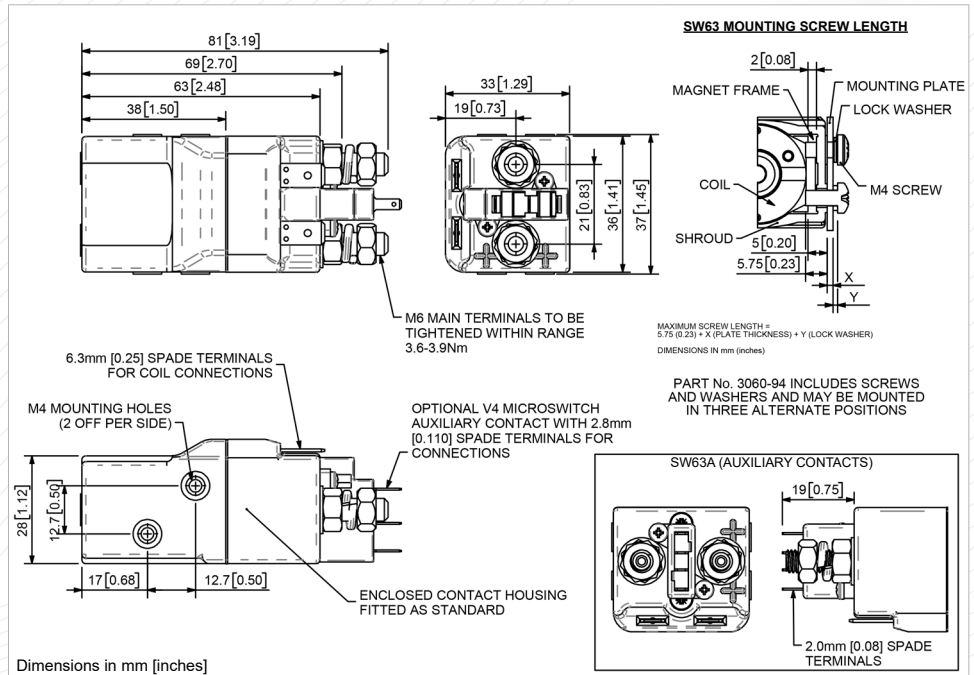
The SW63 is a miniature series single pole, free standing, compact contactor. It is designed to fill the gap between 30 ampere relays and 100 ampere contactors. Typical applications include switching small traction motors, hydraulic power packs and small electric winch motors.

- Uninterrupted current - no or infrequent load switching requirements (maintains a lower contact resistance).

The SW63 features single pole double breaking main contacts with silver alloy tips, which are weld resistant, hard wearing and have excellent conductivity. The SW63 has M6 stud main terminals and 6.3mm spade coil connections. It can be mounted via M4 tapped holes or mounting brackets – either supplied fitted, or as separate items. Mounting can be on the side or base of the contactor. Please note Normally Closed contacts are not suited to make and break load.

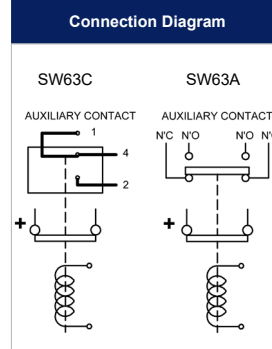


SW63



Contact Performance Key:

— Uninterrupted Current



SW63 Available Options		
General		Suffix
Auxiliary Contacts	○	A
Auxiliary Contacts - V4	○	C
Magnetic Blowouts†	○	B
Magnetic Blowouts - High Powered†	X	
Armature Cap	X	
Mounting Brackets (See Stud Contactor Series Catalogue)	○	
Magnetic Latching† (Not fail safe)	X	
Closed Contact Housing†	●	
Environmentally Protected IP66 (see SW63P Catalogue sheet)	○	P
EE Type (Steel Shroud)	X	
Contacts		
Large Tips	X	
Textured Tips	X	
Silver Plating	X	
Coil		
AC Rectifier Board (Fitted)	X	
Coil Suppression†	○	
Flying Leads	X	
Manual Override Operation	X	
M4 Stud Terminals	○	
M5 Terminal Board	X	
Vacuum Impregnation	X	

Key: Optional ○ Standard ● Not Available X
† Connections become polarity sensitive
‡ Enclosed top cover standard when blowouts not fitted

- Performance data provided should be used as a guide only. Some de-rating or variation from figures may be necessary according to application.
- Thermal current ratings stated are dependant upon the size of conductor being used
- For further technical advice email: technical@albrightinternational.com
- Albright reserve the right to change data without prior notice