

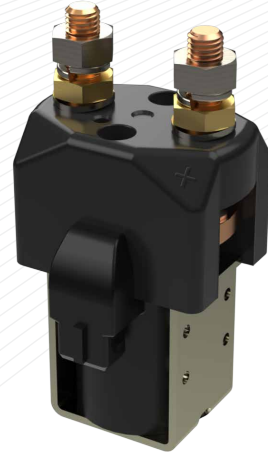
Application	Interrupted	Uninterrupted
Thermal Current Rating ( <sup>1</sup> th)	350A	400A
Intermittent Current Rating:		
30% Duty	635A	730A
40% Duty	550A	630A
50% Duty	495A	565A
60% Duty	450A	515A
70% Duty	420A	480A
Rated Fault Current Breaking Capacity ( <sup>1</sup> cn) 5ms Time Constant: (in accordance with UL583*)		
SU400	1500A at 48V D.C.	
SU400B	1500A at 96V D.C.	
Rated Fault Current Breaking Capacity ( <sup>1</sup> cn) Resistive Load: (in accordance with UL508*)		
SU400	600A at 48V D.C.	
SU400B	600A at 96V D.C.	
Maximum Recommended Contact Voltages (U <sub>G</sub> ):		
SU400	48V D.C.	
SU400B	96V D.C.	
Typical Voltage Drop per pole across New Contacts at 400A	40mV	
Mechanical Durability	>3 x 10 <sup>6</sup> Cycles	
Coil Voltage Available (U <sub>S</sub> )	From 6 to 240V A.C./D.C.	
Coil Power Dissipation:		
Highly Intermittent Rated Types	40 - 50 Watts	
Intermittently Rated types	30 - 40 Watts	
Prolonged Rated Types	15 - 30 Watts	
Continuously Rated Types	10 - 15 Watts	
Maximum Pull-In Voltage (Coil at 20° C) Guideline:		
Highly Intermittent Rated types (Max 25% Duty Cycle)	60% U <sub>S</sub>	
Intermittently Rated types (Max 70% Duty Cycle)	60% U <sub>S</sub>	
Prolonged Operation (Max 90% Duty Cycle)	60% U <sub>S</sub>	
Continuously Rated Types (100% Duty Cycle)	66% U <sub>S</sub>	
Drop-Out Voltage Range	10 - 25% U <sub>S</sub>	
Typical Pull-In Time	30ms	
Typical Drop-Out Time (N/O Contacts to Open):		
Without Suppression	8ms	
With Diode Suppression	60ms	
With Diode and Resistor (Subject to resistance value)	25ms	
Typical Contact Bounce Period	3ms	
Operating Ambient Temperature	- 40°C to + 60°C	
Guideline Contactor Weight:		
SU400	745 gms	
With Auxiliary	+ 20 gms	
With Blowouts	+ 50 gms	
Auxiliary Details		
Auxiliary Thermal Current Rating	5A	
Auxiliary Contact Switching Capabilities (Resistive Load):		
SU400C	SU400A	
	5A at 24V D.C.	
	2A at 48V D.C.	
	0.5A at 240V D.C.	
Advised Connection Sizes for Maximum Continuous Current		
Copper busbar	258mm <sup>2</sup> [0.4 inch <sup>2</sup> ]	
Cable	Rated suitable for Application	
Key:  = Interrupted  = Uninterrupted		
Note: Where applicable values shown are at 20° C		
* Please check our web site for product UL status		

The SU400 with Junior Power Timer (JPT) connector contactor has been designed for direct current loads, particularly motors as used on electronic vehicles such as industrial truck and airport tractors.

- Interrupted** current - opening and closing on load with frequent switching (results in increased contact resistance).
- Uninterrupted** current - no or infrequent load switching requirements (maintains a lower contact resistance).

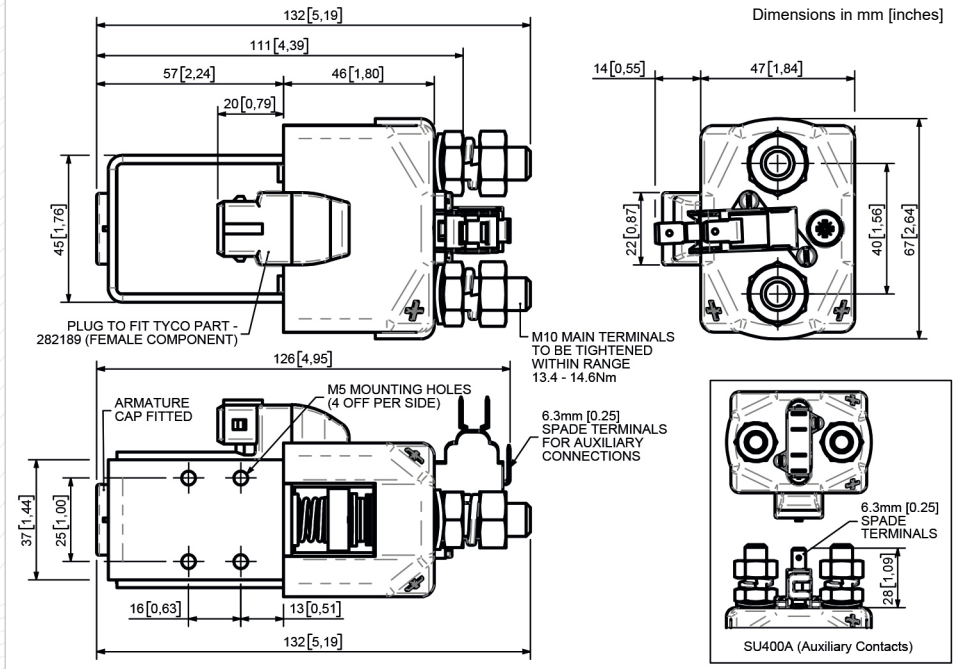
The contactors have double breaking main contacts with silver alloy tips, which are weld resistant, hard wearing and have excellent conductivity. They are easy to install, with M5 tapped holes in the switch frame together with a range of mounting brackets available. Mounting can be vertical or horizontal, when vertical the M10 contact studs should point upwards. If the requirement is for downwards orientation we can adjust the contactor to compensate for this. Electrical connections follow industrial standards and coil configuration offering termination via a JPT connector, allows quick, polarity sensitive connection to the applications harness.

Compliant with EN1175:2020

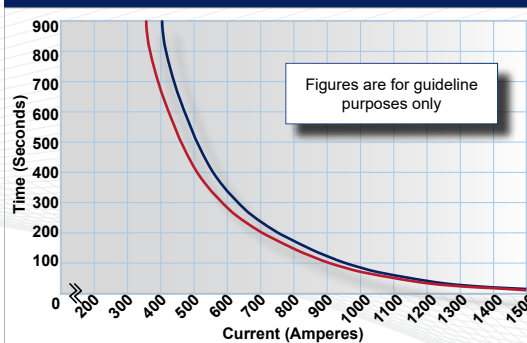


SU400 with JPT Connector

Dimensions in mm [inches]



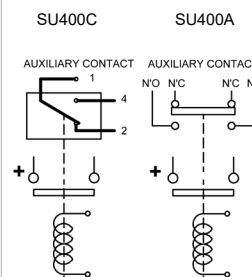
SU400 with JPT Connector Contactor Performance



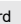
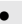
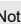
Contact Performance Key:

- Interrupted Current
- Uninterrupted Current

Connection Diagram



SU400 Available Options

General	Suffix
Auxiliary Contacts	○ A
Auxiliary Contacts - V3	○ C
Magnetic Blowouts†	○ B
Magnetic Blowouts - High Powered†	○ B
Armature Cap	●
Mounting Brackets	○
Magnetic Latching† (Not fail safe)	○ M
Closed Contact Housing	○
Environmentally Protected IP66 (see SU400P Catalogue Data Sheet)	X
EE Type (Steel Shroud)	X
Contacts	
Large Tips	X
Textured Tips	○ T
Silver Plating	X
Coil	
AC Rectifier Board (Fitted)	X
Coil Suppression†	○
Flying Leads	X
Junior Power Timer Connector	●
Manual Override Operation	X
M4 Stud Terminals	X
M5 Terminal Board	X
Vacuum Impregnation	X
Key:  Optional  Standard  Not Available X	
† Connections become polarity sensitive	