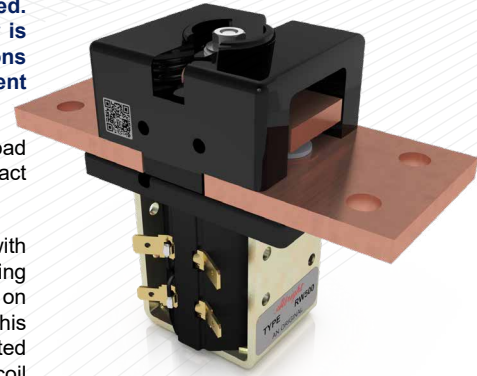


The Reduced Silver series are suitable for applications where infrequent switching is specified. In such applications the degradation of the tip is minimal and therefore a higher volume of silver is unnecessary. The RW500 is designed for use in telecommunication and power distribution applications where an uninterrupted load is switched. These contactors are primarily for use with Direct Current loads but can also be used with Alternating Currents.

Application	Uninterrupted
Thermal Current Rating (I _{th})	500A
Intermittent Current Rating:	
30% Duty	915A
40% Duty	790A
50% Duty	705A
60% Duty	645A
70% Duty	600A

- Uninterrupted current - no or infrequent load switching requirements (maintains lower contact resistance).

The RW500 features double breaking main contacts with silver alloy tips which are weld resistant, hard wearing and have excellent conductivity. Silver plating on the main contacts is optional for the RW500. This compact contactor can be busbar mounted vertically or horizontally, but if mounted vertically, the coil should be at the bottom. If the coil is required at the top, we can adjust the contactor to compensate for this.



RW500

Rated Fault Current Breaking Capacity (I _{cn}) Resistive Load: (in accordance with UL508*)	750A at 60V D.C.
---	------------------

Maximum Recommended Contact Voltages (U_e):

RW500	60V D.C.
-------	----------

Typical Voltage Drop per pole across New Contacts at 500A	50mV
---	------

Mechanical Durability	>1 x 10 ⁶ Cycles
-----------------------	-----------------------------

Coil Voltage Available (U _s) (Rectifier board required for A.C.)	From 6 to 240V A.C./D.C.
---	--------------------------

Coil Power Dissipation:	
-------------------------	--

Highly Intermittent Rated Types	40 - 50 Watts
---------------------------------	---------------

Intermittently Rated Types	30 - 40 Watts
----------------------------	---------------

Prolonged Rated Types	15 - 30 Watts
-----------------------	---------------

Continuously Rated Types	10 - 15 Watts
--------------------------	---------------

Maximum Pull-In Voltage (Coil at 20° C) Guideline:

Highly Intermittent Rated types (Max 25% Duty Cycle)	60% U _s
---	--------------------

Intermittently Rated types (Max 70% Duty Cycle)	60% U _s
--	--------------------

Prolonged Operation (Max 90% Duty Cycle)	60% U _s
---	--------------------

Continuously Rated Types (100% Duty Cycle)	66% U _s
---	--------------------

Drop-Out Voltage Range	10 - 30% U _s
------------------------	-------------------------

Typical Pull-In Time	30ms
----------------------	------

Typical Drop-Out Time (N/O Contacts to Open):

Without Suppression	8ms
---------------------	-----

With Diode Suppression	60ms
------------------------	------

With Diode and Resistor (Subject to resistance value)	25ms
--	------

Typical Contact Bounce Period	< 5ms
-------------------------------	-------

Operating Ambient Temperature	- 40°C to + 60°C
-------------------------------	------------------

Guideline Contactor Weight:

RW500	1030 gms
-------	----------

With Auxiliary	+ 20 gms
----------------	----------

Auxiliary Details

Auxiliary Thermal Current Rating	5A
----------------------------------	----

Auxiliary Contact Switching Capabilities (Resistive Load):

RW500C	RW500A
5A at 24V D.C.	
2A at 48V D.C.	
0.5A at 240V D.C.	

Advised Connection Sizes for Maximum Continuous Current

Copper busbar	322mm ² [0.5inch ²]
---------------	--

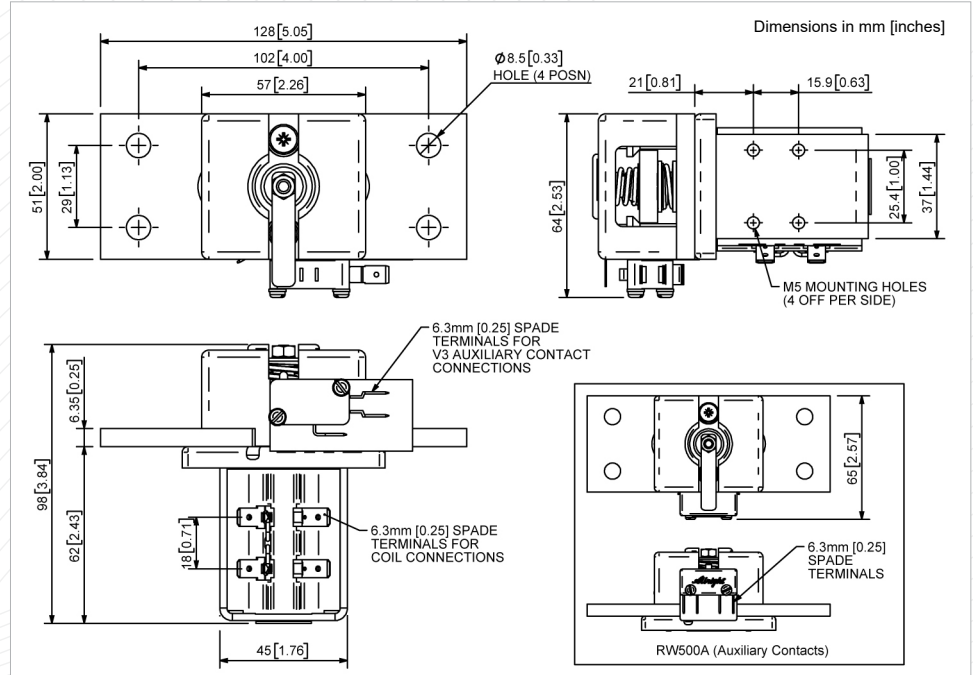
Cable	Rated suitable for Application
-------	--------------------------------

Key: ▲ = Uninterrupted

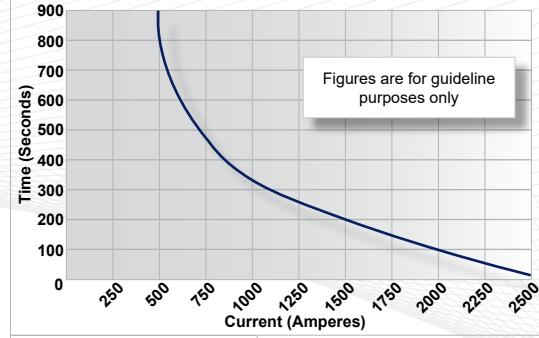
Note: Where applicable values shown are at 20° C

* Please check our web site for product UL status

- Performance data provided should be used as a guide only. Some de-rating or variation from figures may be necessary according to application.
- Thermal current ratings stated are dependant upon the size of conductor being used
- For further technical advice email: technical@albrightinternational.com
- Albright reserve the right to change data without prior notice



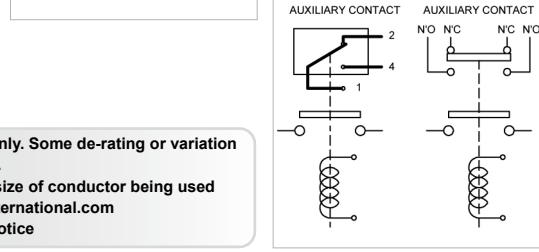
RW500 Contactor Performance



Contact Performance Key:

— Uninterrupted Current

Connection Diagram



RW500 Available Options

General		Suffix
Auxiliary Contacts	○	A
Auxiliary Contacts - V3	○	C
Magnetic Blowouts†	X	
Magnetic Blowouts - High Powered†	X	
Armature Cap	X	
Mounting Brackets (see Busbar Series Catalogue)	○	
Magnetic Latching† (Not fail safe)	○	M
Closed Contact Housing	X	
Environmentally Protected IP66	X	
EE Type (Steel Shroud)	X	

Contacts

Textured Tips	○	T
Silver Plating	○	

Coil

AC Rectifier Board (Fitted)	○	
Coil Suppression†	○	
Flying Leads	○	F
Manual Override Operation	○	
M4 Stud Terminals	X	
M5 Terminal Board	○	
Vacuum Impregnation	○	

Key: Optional ○ Standard ● Not Available X
† Connections become polarity sensitive