

The DC64P has been designed for direct current loads, such as motors used on small winches. The DC64P is a monoblock construction, resulting in a compact design which is compatible with modern electronic control systems. Devised for both interrupted and uninterrupted loads, the DC64P is suitable for switching Resistive, Capacitive and Inductive loads.

- **Interrupted** current - opening and closing on load with frequent switching (results in increased contact resistance).
- **Uninterrupted** current - no or infrequent load switching requirements (maintains a lower contact resistance).



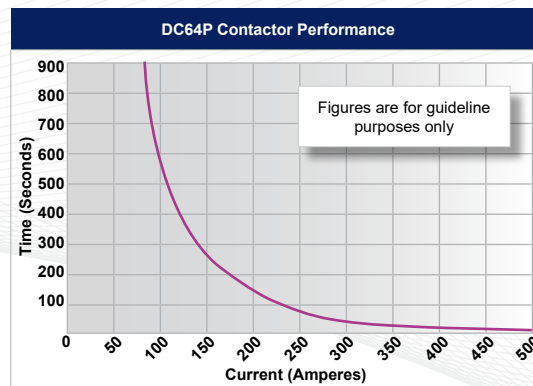
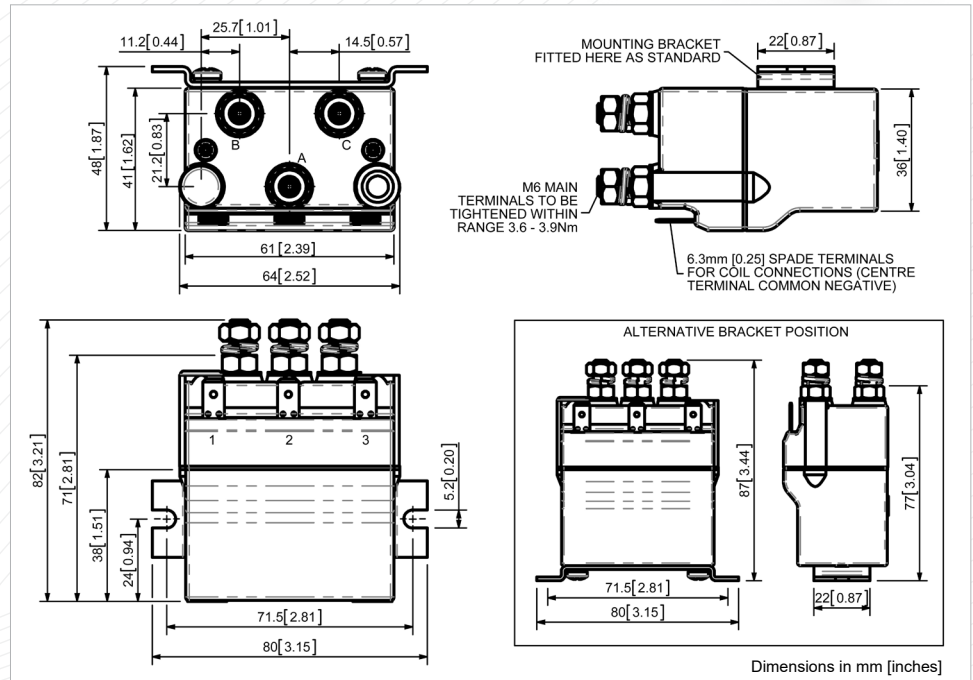
Application	Interrupted	Uninterrupted
Thermal Current Rating (I_{th})		80A
Intermittent Current Rating:		
30% Duty		145A
40% Duty		125A
50% Duty		115A
60% Duty		105A
70% Duty		95A

The DC64P has double breaking main contacts with silver alloy tips, which are weld resistant, hard wearing and have excellent conductivity. The 'P' type configuration offers greater environmentally protected switches, compliant to IP67. The DC64P has M6 main stud terminals and coil connections are by means of 6.3mm spades.

Rated Fault Current Breaking Capacity (I_{cn}) 5ms Time Constant: (in accordance with UL583*)		
DC64P	500A at 60V D.C.	
Rated Fault Current Breaking Capacity (I_{cn}) Resistive Load: (in accordance with UL508*)		
DC64P	120A at 48V D.C.	
Maximum Recommended Contact Voltages (U_c): (Both Poles in same circuit)		
DC64P	48V D.C.	
Typical Voltage Drop per pole across New Contacts at 80A		40mV
Mechanical Durability		>3 x 10 ⁶ Cycles
Coil Voltage Available (U_s)		From 6 to 130V D.C.
Coil Power Dissipation:		
Highly Intermittent Rated Types		14 - 21 Watts
Intermittently Rated types		10 - 14 Watts
Prolonged Rated Types		7 - 10 Watts
Continuously Rated Types		5 - 7 Watts
Maximum Pull-In Voltage (Coil at 20° C) Guideline:		
Highly Intermittent Rated types (Max 25% Duty Cycle)		60% U_s
Intermittently Rated types (Max 70% Duty Cycle)		60% U_s
Prolonged Operation (Max 90% Duty Cycle)		60% U_s
Continuously Rated Types (100% Duty Cycle)		66% U_s
Drop-Out Voltage Range		10 - 25%
Typical Pull-In Time		15ms
Typical Drop-Out Time (N/O Contacts to Open):		
Without Suppression		6ms
With Diode Suppression		35ms
With Diode and Resistor (Subject to resistance value)		8 - 20ms
Typical Contact Bounce Period		3ms
Operating Ambient Temperature		-40°C to +60°C
Guideline Contactor Weight:		
DC64P		430 gms
Advised Connection Sizes for Maximum Continuous Current		
Copper busbar		52 mm ² [0.08 inch ²]
Cable		Rated suitable for Application

Key: ▾ = Interrupted ▴ = Uninterrupted
Note: Where applicable values shown are at 20°C
 * Please check our web site for product UL status

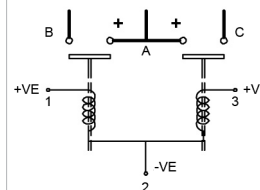
- Performance data provided should be used as a guide only. Some de-rating or variation from figures may be necessary according to application.
- Thermal current ratings stated are dependant upon the size of conductor being used
- For further technical advice email: technical@albrightinternational.com
- Albright reserve the right to change data without prior notice



Contact Performance Key:

— Interrupted and Uninterrupted Current

Connection Diagram



DC64P Available Options

General	Suffix
Auxiliary Contacts	X
Auxiliary Contacts - V3	X
Magnetic Blowouts†	X
Magnetic Blowouts - High Powered†	X
Armature Cap	X
Mounting Brackets	●
Magnetic Latching† (Not fail safe)	X
Closed Contact Housing	●
Environmentally Protected IP67	● P
EE Type (Steel Shroud)	X
Contacts	
Large Tips	X
Textured Tips	X
Silver Plating	X
Coil	
AC Rectifier Board (Fitted)	X
Coil Suppression†	○
Flying Leads	X
Manual Override Operation	X
M4 Stud Terminals	○
M5 Terminal Board	X
Vacuum Impregnation	X

Key: Optional ○ Standard ● Not Available X
 † Connections become polarity sensitive