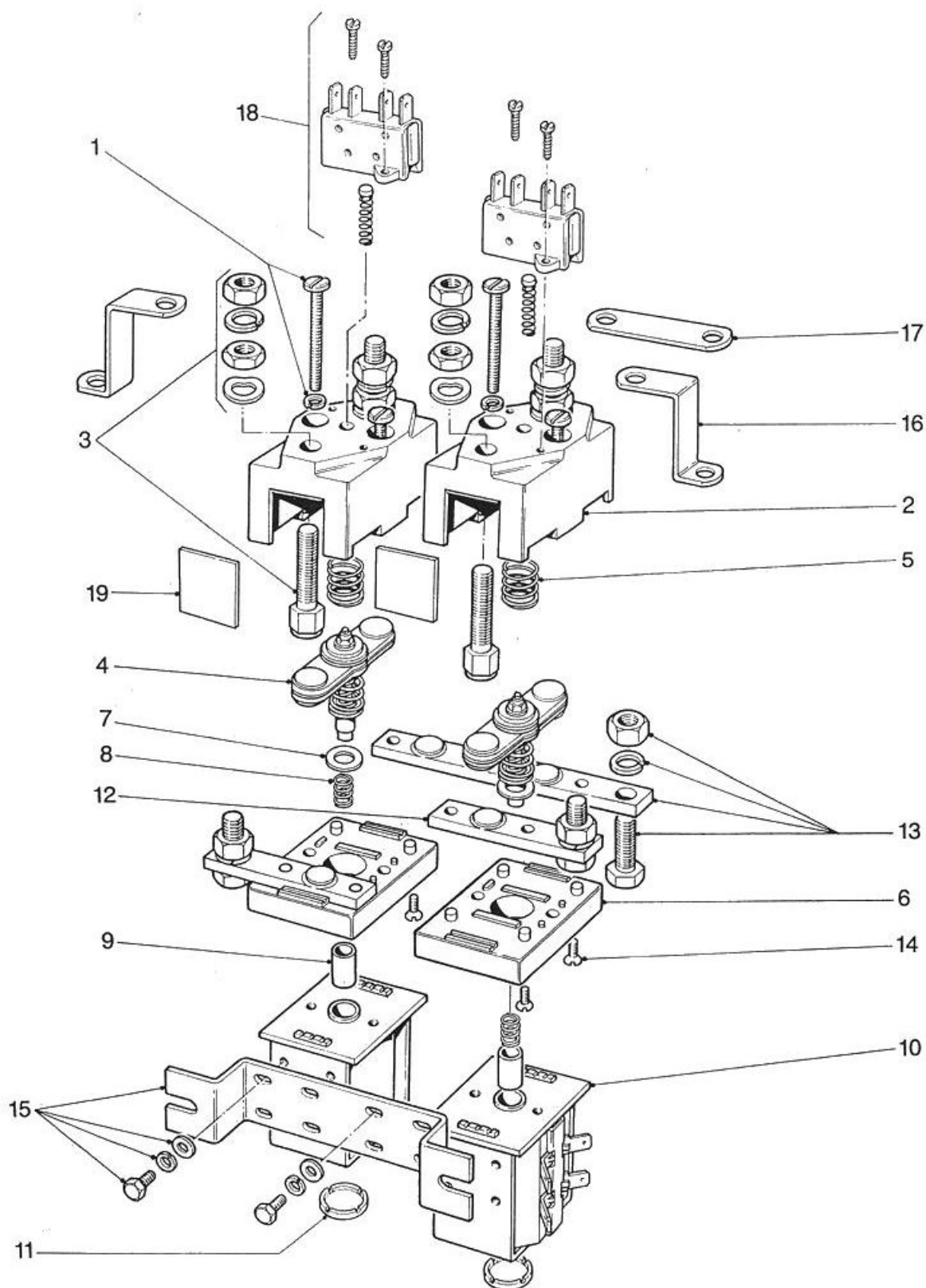




SPARE PARTS FOR SOLENOID SWITCH TYPES SW101 and SW102



Spare parts for Solenoid Switch types SW101 and SW102

Suffix 'A' indicates with auxiliary contacts
Suffix 'B' indicates with magnetic blowouts

SW101 and SW102			Quantity	
Item	Part No.	Description	SW101	SW102
1	2159-22	Top Cover Screw with Lock Washer	2	4
2	2159-4A	Top Cover Moulding (SW101, SW102)	1	2
	2159-4C	Top Cover Moulding (SW101A, SW102A)	1	2
	2159-19A	Top Cover Moulding (SW101B, SW102B)	1	2
	2155-19C	Top Cover Moulding (SW101AB, SW102AB)	1	2
2&3	2159-20A	Top Cover Moulding with fixed contacts 2159-18 (SW101, SW102)	1	2
	2159-20E	Top Cover Moulding with fixed contacts 2159-18 (SW101A, SW102A)	1	2
	2159-20C	Top Cover Moulding with fixed contacts 2159-18 (SW101B, SW102B)	1	2
	2159-20G	Top Cover Moulding with fixed contacts 2159-18 (SW101AB, SW102AB)	1	2
3	2159-18	Fixed Contacts with nuts and washers	2	4
4	2159-23A	Moving Contact Assembly complete with contact springs bushes and insulated parts	1	2
5*	2028-30	Return Spring	1	2
6	2159-5	Top Cover Base Moulding	1	2
7	2159-177	Centre Plunger Insulator included in Moving Contact Assembly 2159-23A	1	2
8	2159-92	Plunger Spring included in Moving Contact Assembly 2159-23A	1	2
9	2159-9	Moving Contact Plunger included in Moving Contact Assembly 2159-23A	1	2
10*	2159-38	Assembled Coil and Magnet Frame	1	2
11	2180-246	End Cap	1	2
12	2159-27	Fixed Changeover Contact with nut, bolt and washer (single)	2	2
13	2159-30	Fixed Changeover Contact with nut, bolt and washer (double)	–	1
14	2155-41	Changeover Contact Fixing Screw (not required on current types)	4	8
15	2159-39	Mounting Bracket with screws and washers	–	1
16	2159-36	Link (Cranked)	–	2
17	2159-35	Link (Straight)	–	1
18	2159-117	Auxiliary Contact Kit (SW101A, SW102A)	1	2
19	2159-40	Dust Shield – optional	2	4
20	2159-192	Spare Contact Kit	1	
21	2159-100	Spare Contact Kit	–	1

* When ordering these items please state full type number of contactor for which items are required.

Note: M8 nuts to items 3, 12 and 13 should be tightened to a torque of 8 to 9.5 Nm.

ALBRIGHT INTERNATIONAL LTD.

125 Red Lion Road, Surblton, Surrey, KT6 7QS, England.

Tel: +44 (0) 20 8390 5357 Fax: +44 (0) 20 8390 1927 Email: Technical: technical@albright.co.uk Sales: sales@albright.co.uk

Sept 07