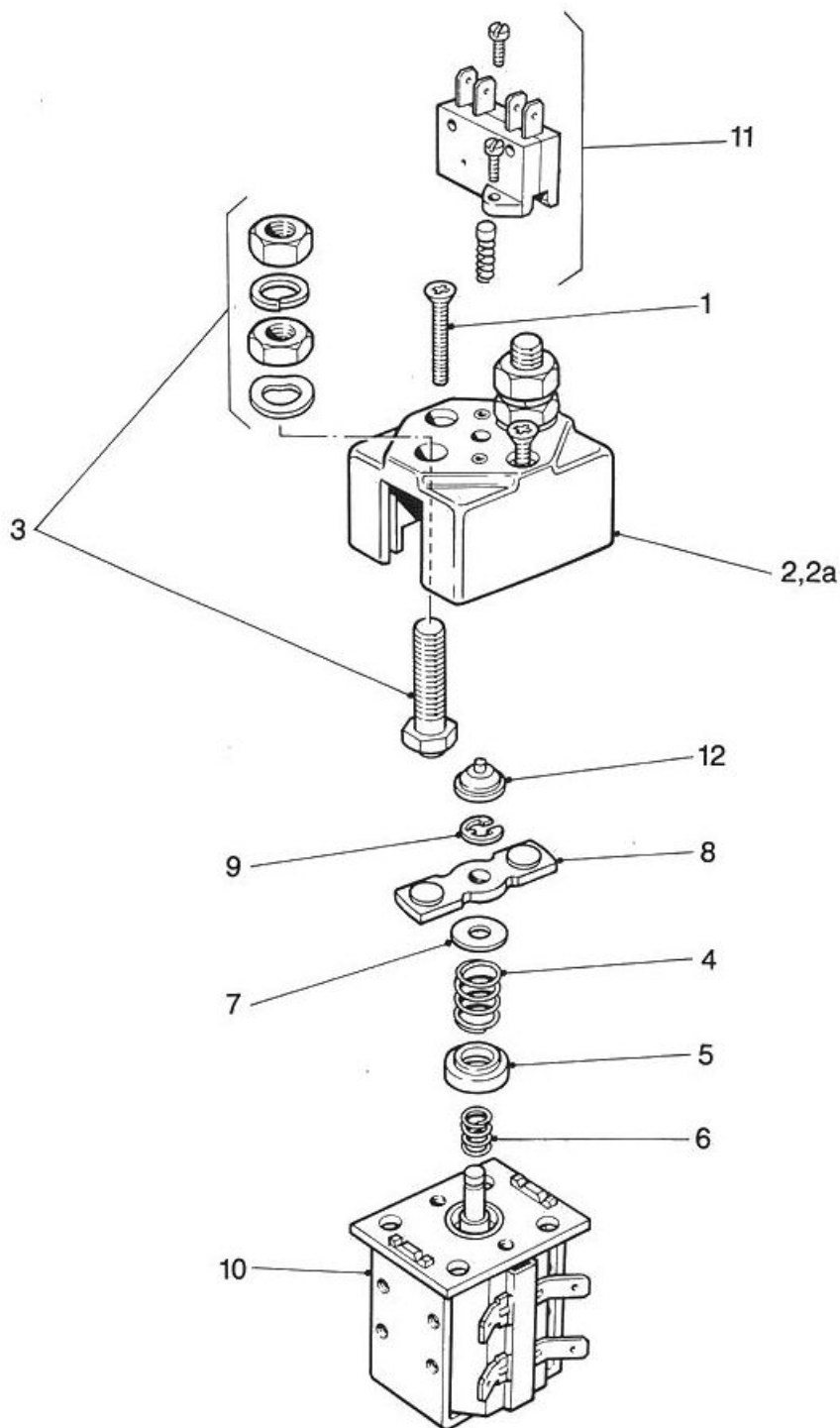




SPARE PARTS FOR SOLENOID SWITCH TYPE SW85



ALBRIGHT INTERNATIONAL LTD.

125 Red Lion Road, Surbiton, Surrey, KT6 7QS, England.

Tel: +44 (0) 20 8390 5357 Fax: +44 (0) 20 8390 1927

Email: Technical: technical@albright.co.uk Sales: sales@albright.co.uk

Sept 07

Spare parts for Solenoid Switch type SW85

*Suffix 'A' indicates auxiliary contacts
Suffix 'B' indicates magnetic blowouts
Suffix 'L' indicates large contact tips*

SW85			
Item	Part No.	Description	Quantity
1	2070-19	Top Cover Fixing Screw	2
2	2070-4	Top Cover Moulding (SW85)	1
	2070-4B	Top Cover Moulding (SW85A)	1
	2070-58	Top Cover Moulding (SW85B)	1
	2070-58D	Top Cover Moulding (SW85AB)	1
2a	2070-4D	Top Cover Moulding Enclosed – optional (SW85)	1
	2070-58H	Top Cover Moulding Enclosed – optional (SW85A)	1
	2070-58F	Top Cover Moulding Enclosed – optional (SW85B)	1
	2070-58K	Top Cover Moulding Enclosed – optional (SW85AB)	1
3	2070-46	Fixed Contact Assembly	2
	2070-85	Fixed Contact Assembly (SW85L)	2
4	2070-16G	Return Spring	1
5	2070-79	Return Spring Insulator	1
6	2070-9	Contact Spring	1
7	2070-36	Spring Insulating Washer	1
8	2070-177	Moving Contact	1
	2070-178	Moving Contact (SW85L)	1
9	2028-642	Circlip	1
10*	–	Assembled Coil and Magnet Frame	1
11	2070-124A	Auxiliary Contact Kit (SW85A)	1
12	2070-15	Insulator (SW85A)	1
13	2070-388	Contact Kit (SW85)	1
	2071-55	Contact Kit (SW85L)	1

* When ordering these items please state full type number of contactor for which items are required.

Note: M8 nuts to item 3 should be tightened to a torque of 8 to 9.5 Nm.

ALBRIGHT INTERNATIONAL LTD.

125 Red Lion Road, Surbiton, Surrey, KT6 7QS, England.

Tel: +44 (0) 20 8390 5357 Fax: +44 (0) 20 8390 1927 Email: Technical: technical@albright.co.uk Sales: sales@albright.co.uk

Sept 07