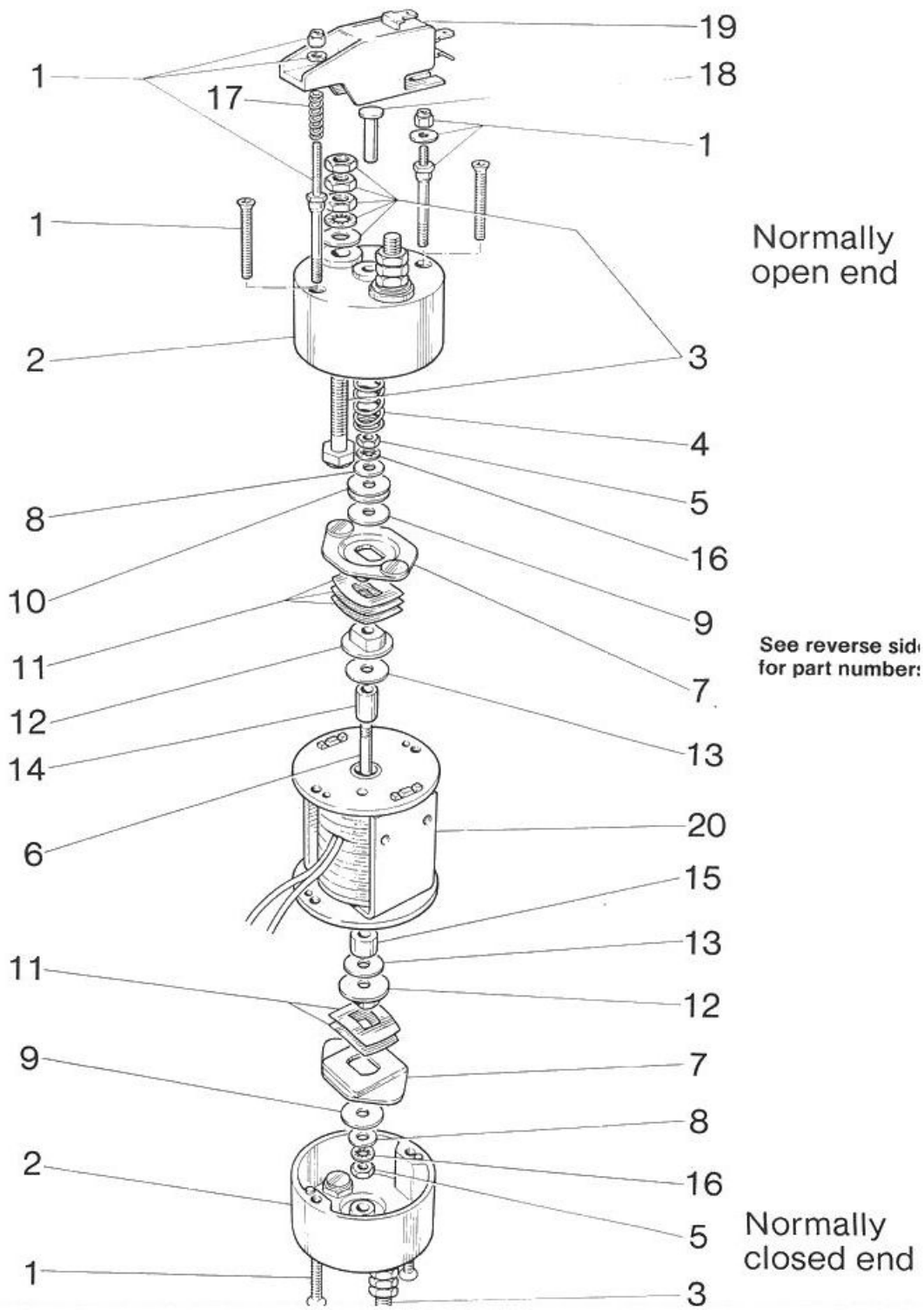


SOLENOID SWITCH TYPE SW.129 & SW.129A



Spare Parts for Solenoid Switch Types SW.129 & SW.129A

SW.129-1 to SW.129-17 inclusive

Item	Part No	Switch Type	No off	Item	Part No	Switch Type	No off
1	COVER SCREWS			11	CONTACT SPRING		
	2028-236D	SW.129 std.	4		2110-25A	SW.129 & 129A std. N'O end	3
	2028-236D	SW.129A N'C end	2		2110-25A	SW.129 & 129A std. N'C end	2
	2126-42B (long)	SW.129A N'O end	1				
	2126-42 (short)	SW.129A N'O end	1				
2	BAKELITE COVER			12	CONTACT BUSH		
	2110-29	SW.129 std.	2		2110-8A	SW.129 & 129A std.	2
	2110-29	SW.129A N'C end	1				
	2110-29A	SW.129A N'O end	1	13	STOP WASHER		
3	TERMINAL CONTRACTS (FIXED) with nuts and washers				2110-64	SW.129 & 129A std.	2
	2110-43	SW.129 & 129A std.	4	14	DISTANCE PIECE		
4	RETURN SPRING				2110-66A	SW.129 & 129A std.	1
	2114-19	SW.129 & 129A std.	1	15	ARMATURE EXTENSION		
	2126-12	SW.129-2, 7.	1		2126-46	SW.129 & 129A std.	1
5	ARMATURE BOLT NUT			16	LOCK WASHER		
	2126-49	SW.129 & 129A std.	2		2126-50	SW.129 & 129A std.	2
6	ARMATURE BOLT			17	MICRO-SWITCH ADJUSTING SPRING		
	2110-67	SW.129 & 129A std.	1		2073-81A	SW.129A N'O end std.	1
7	MOVING CONTACT			18	MICRO-SWITCH OPERATING PLUNGER		
	2110-20	SW.129 & 129A std.	2		2028-125C	SW.129A N'O end std.	1
8	WASHER			19	MICRO-SWITCH ASSEMBLY		
	2110-64A	SW.129 & 129A std.	2		2137-3	SW.129A N'O end std.	1
9	INSULATING WASHER			20	ASSEMBLED MAGNET FRAME AND COIL		
	2110-63	SW.129 & 129A std.	2		STATE SYMBOL No. OF SWITCH		1
10	RETURN SPRING ADJUSTING WASHER						
	2110-63A	SW.129 & 129A std.	As required				