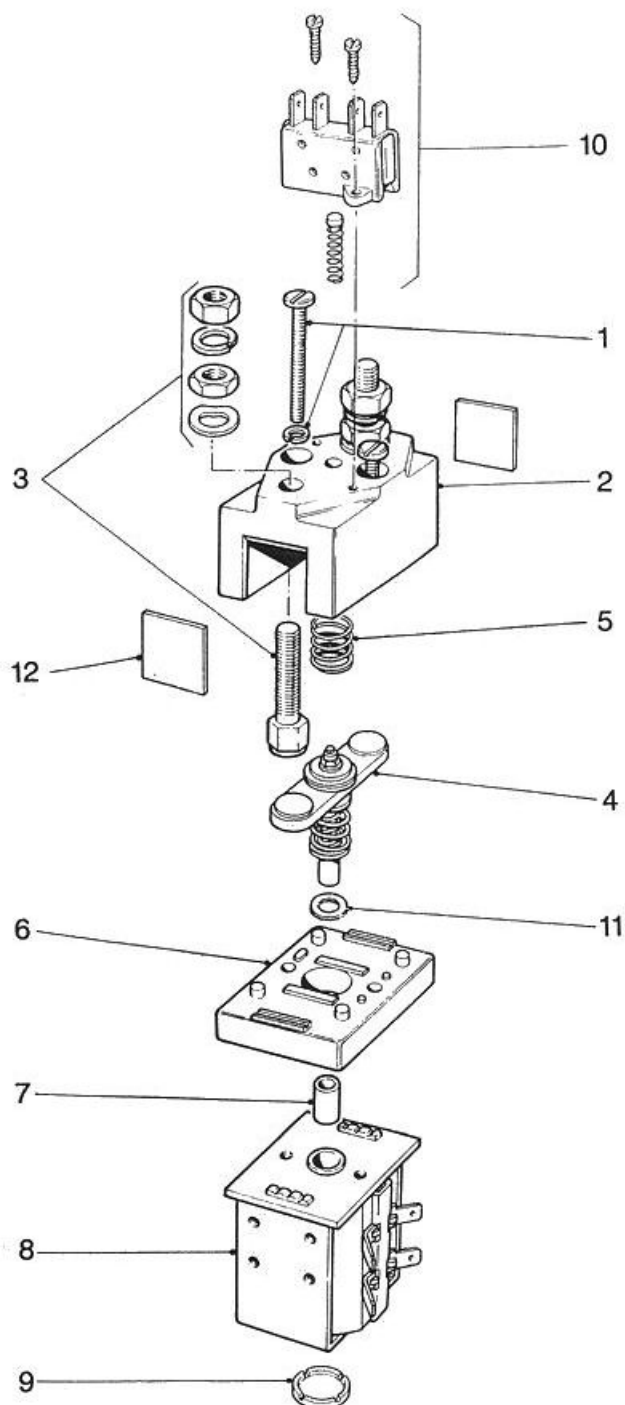




SPARE PARTS FOR SOLENOID SWITCH TYPE SW100



Spare parts for Solenoid Switch type SW100

Suffix 'A' indicates with auxiliary contacts

Suffix 'B' indicates with magnetic blowouts

| SW100 | | | |
|-------|----------|---|----------|
| Item | Part No. | Description | Quantity |
| 1 | 2159-22 | Top Cover Screw with Lock Washer | 2 |
| 2 | 2159-4 | Top Cover Moulding (SW100) | 1 |
| | 2159-4B | Top Cover Moulding (SW100A) | 1 |
| | 2159-19 | Top Cover Moulding (SW100B) | 1 |
| | 2159-19B | Top Cover Moulding (SW100AB) | 1 |
| 2 & 3 | 2159-20 | Top Cover Moulding with fixed contacts 2159-18 (SW100) | 1 |
| | 2159-20D | Top Cover Moulding with fixed contacts 2159-18 (SW100A) | 1 |
| | 2159-20B | Top Cover Moulding with fixed contacts 2159-18 (SW100B) | 1 |
| | 2159-20F | Top Cover Moulding with fixed contacts 2159-18 (SW100AB) | 1 |
| 3 | 2159-18 | Fixed Contact with nuts and washers | 2 |
| 4 | 2159-23 | Moving Contact Assembly complete with contact springs, bushes and insulated parts | 1 |
| 5* | 2028-30 | Return Spring | 1 |
| 6 | 2159-5 | Top Cover Base Moulding | 1 |
| 7 | 2159-9 | Moving Contact Plunger, included in Moving Contact Assembly 2159-23 | 1 |
| 8* | 2159-38 | Assembled Coil and Magnet Frame | 1 |
| 9 | 2180-246 | End Cap | 1 |
| 10 | 2159-117 | Auxiliary Contact Kit (SW100A) | 1 |
| 11 | 2159-177 | Centre Plunger Insulator, included in Moving Contact Assembly 2159-23 | 1 |
| 12 | 2159-40 | Dust Shield – optional | 2 |
| 13 | 2159-98 | Spare Contact Kit | 1 |

* When ordering these items please state full type number of contactor for which items are required.

Note: M8 nuts to item 3 should be tightened to a torque of 8 to 9.5 Nm.

ALBRIGHT INTERNATIONAL LTD.

125 Red Lion Road, Surbiton, Surrey, KT6 7QS, England.

Tel: +44 (0) 20 8390 5357 Fax: +44 (0) 20 8390 1927 Email: Technical: technical@albright.co.uk Sales: sales@albright.co.uk

Sept 07