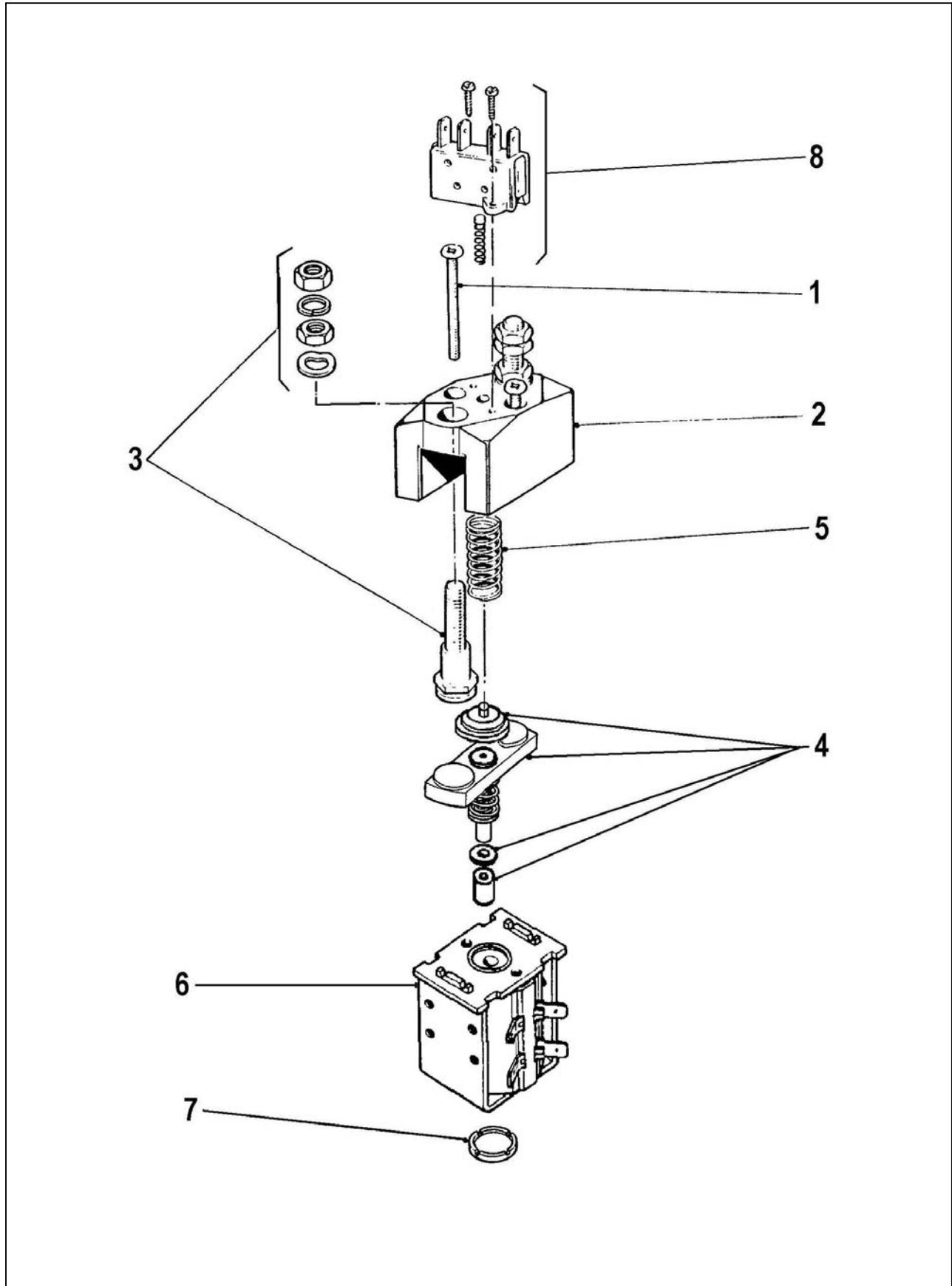




SPARE PARTS FOR  
SOLENOID SWITCH TYPE  
SU280



## Spare parts for Solenoid Switch type SU280

Suffix 'A' indicates contactor built with Auxiliary Contacts.

Suffix 'B' indicates contactor built with Permanent Magnetic Blowouts.

### SU280

Item	Part No.	Description	Quantity
1	2180-38	Top Cover Fixing Screw.	2
2	2181-632	Top Cover Moulding (SU280)	1
	2181-674	Top Cover Moulding (SU280B)	1
	2181-632B	Top Cover Moulding (SU280A)	1
	2181-674E	Top Cover Moulding (SU280AB)	1
2A	2181-632A	Top Cover Moulding Enclosed – Optional (SU280)	1
	2181-674A	Top Cover Moulding Enclosed – Optional (SU280B)	1
	2181-632C	Top Cover Moulding Enclosed – Optional (SU280A)	1
	2181-674D	Top Cover Moulding Enclosed – Optional (SU280AB)	1
3	2155-812	Fixed Contact Assembly.	2
2 & 3	2181-633	Top Cover Moulding with Fixed Contacts (SU280)	1
	2181-633G	Top Cover Moulding with Fixed Contacts (SU280B)	1
	2181-633D	Top Cover Moulding with Fixed Contacts (SU280A)	1
	2181-633K	Top Cover Moulding with Fixed Contacts (SU280AB)	1
2A & 3	2181-633A	Top Cover Moulding Enclosed with Fixed Contacts (SU280)	1
	2181-633F	Top Cover Moulding Enclosed with Fixed Contacts (SU280B)	1
	2181-633J	Top Cover Moulding Enclosed with Fixed Contacts (SU280A)	1
	2181-633E	Top Cover Moulding Enclosed with Fixed Contacts (SU280AB)	1
4	2155-587	Moving Contact Assembly.	1
5**	2065-43__	Return Spring	1
6**	2180-40__	Assembled Magnet Frame & Coil.	1
7	2180-246	End Cap	1
8	2155-352	Auxiliary Contact Kit (SU280A)	1

\*\*When ordering these items, please state full type number of contactor for which items are required.

Note: M10 nuts to item 3 should be tightened to a torque of 13.4 to 14.6 Nm.



**ALBRIGHT INTERNATIONAL LTD**  
**125 RED LION ROAD - SURBITON**  
**SURREY KT6 7QS - ENGLAND**  
**TEL: +44 (020) 8390 5357**  
**FAX: +44 (020) 8390 1927**  
**WEBSITE: www.albright.co.uk**