

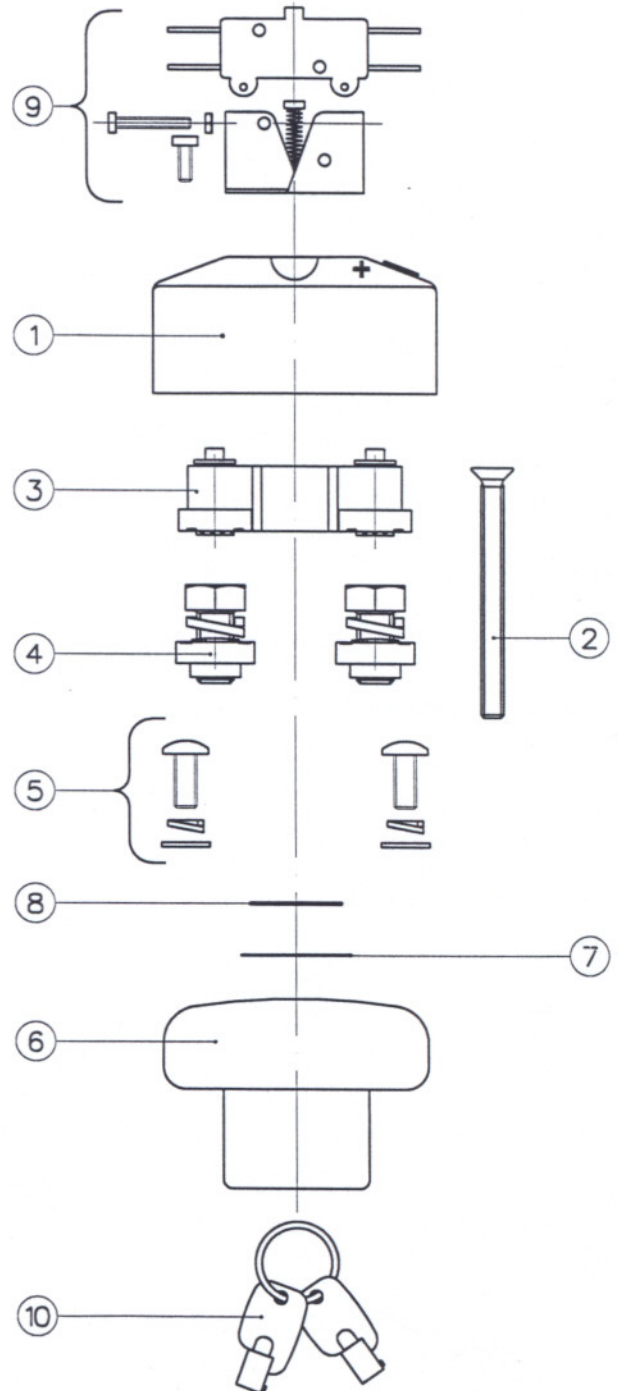


SPARE PARTS FOR BATTERY DISCONNECTING SWITCH TYPE ED252

Suffix 'A' indicates auxiliary contacts
 Suffix 'B' indicates magnetic blowouts
 Suffix 'L' indicates lockable version

ED252

ITEM	PART No.	DESCRIPTION	QTY.
1	2200-13	TOP COVER (ED252 & ED252L).	1-OFF
1a	2200-73	TOP COVER (ED252A & ED252LA).	1-OFF
1b	2200-73a	TOP COVER (ED252B & ED252LB).	1-OFF
1c	2200-73b	TOP COVER (ED252AB & ED252LAB).	1-OFF
1d	2200-13a	TOP COVER ENCLOSED (ED252 & ED252L).	1-OFF
1e	2200-73c	TOP COVER ENCLOSED (ED252A & ED252LA).	1-OFF
1f	2200-73d	TOP COVER ENCLOSED (ED252B & ED252LB).	1-OFF
1g	2200-73e	TOP COVER ENCLOSED (ED252AB & ED252LAB).	1-OFF
2	2200-18	TOP COVER FIXING SCREW.	2-OFF
3	2200-59	MOVING CONTACT.	1-OFF
4	2200-28	FIXED CONTACT ASSEMBLY.	4-OFF
3&4	2200-64	CONTACT KIT.	1-OFF
5	2200-72	MOUNTING HARDWARE.	1-OFF
6	2200-6	OPERATING KNOB.	1-OFF
6a	2200-7	OPERATING KNOB (ED252L).	1-OFF
7	2200-38	CIRCLIP (ED252L).	1-OFF
8	2200-39	WAVY WASHER (ED252L).	1-OFF
9	2200-65	AUXILIARY CONTACT KIT. (ED252A)	1-OFF
10	2200-50	KEYS (SET OF 2) (ED252L).	1-OFF



NOTE: M8 main terminals (item 4) should be tightened to a torque of 8.5 to 10 Nm.



REF: 00339

MAY 1996

ALBRIGHT INTERNATIONAL LTD
 ALBRIGHT (Engineers) LTD
 125 RED LION ROAD
 SURBITON, SURREY KT6 7QS
 ENGLAND
 TELEPHONE 44 (0) 181 390 5357
 FACSIMILE 44 (0) 181 390 1927