

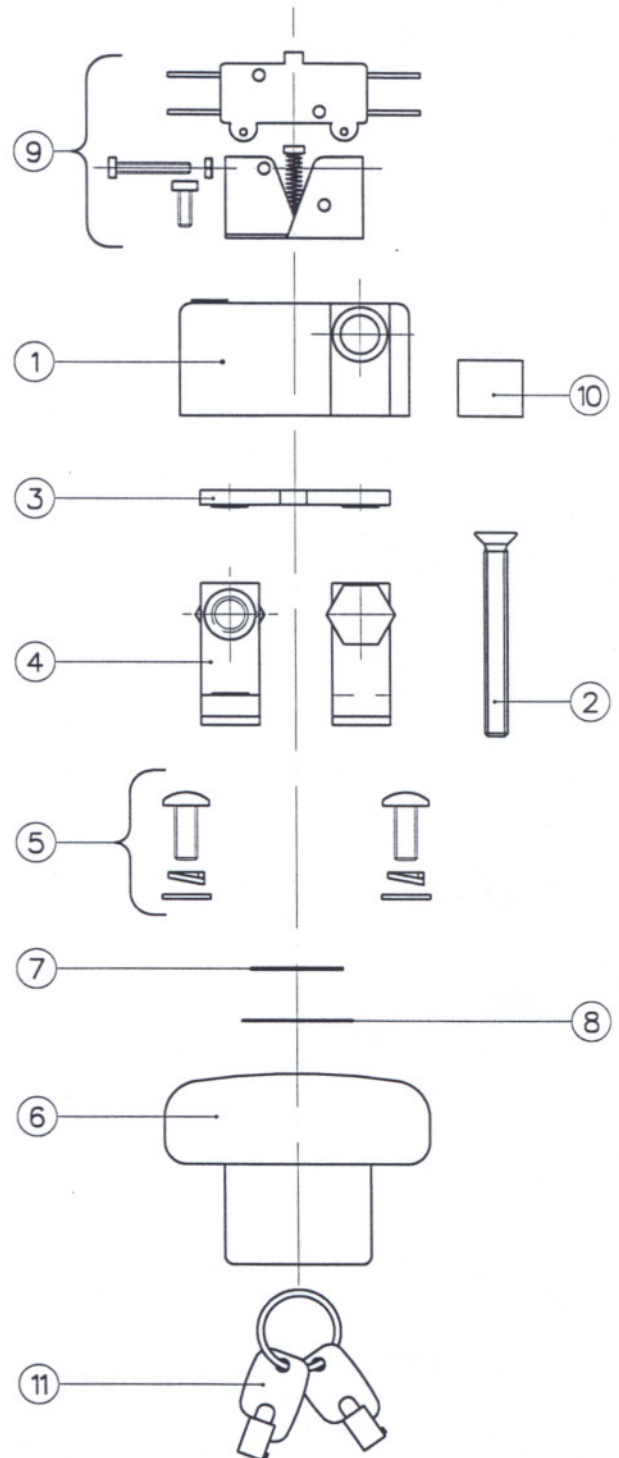


SPARE PARTS FOR BATTERY DISCONNECTING SWITCH TYPE ED125

Suffix 'A' indicates auxiliary contacts
 Suffix 'B' indicates magnetic blowouts
 Suffix 'L' indicates lockable version

ED125

ITEM	PART No.	DESCRIPTION	QTY.
1	2555-1	TOP COVER (ED125 & ED125L).	1-OFF
1a	2555-25	TOP COVER (ED125A & ED125LA).	1-OFF
1b	2555-25a	TOP COVER (ED125B & ED125LB).	1-OFF
1c	2555-25b	TOP COVER (ED125AB & ED125LAB).	1-OFF
2	2555-11	TOP COVER FIXING SCREW.	2-OFF
3	2070-177	MOVING CONTACT.	1-OFF
4	2555-5	FIXED CONTACT ASSEMBLY.	2-OFF
3&4	2555-26	CONTACT KIT.	1-OFF
5	2200-72	MOUNTING HARDWARE.	1-OFF
6	2200-6	OPERATING KNOB.	1-OFF
6a	2200-7	OPERATING KNOB (ED125L).	1-OFF
7	2200-38	CIRCLIP (ED125L).	1-OFF
8	2200-39	WAVY WASHER (ED125L).	1-OFF
9	2555-27	AUXILIARY CONTACT KIT (ED125A).	1-OFF
10	2555-15	DUST SHIELD-(OPTIONAL).	2-OFF
11	2200-50	KEYS (SET OF 2) (ED125L).	1-OFF



NOTE: M8 main terminals (item 4) should be tightened to a torque of 8.5 to 10 Nm.

