

| Application   | Uninterrupted               |
|---|-----------------------------|
| Thermal Current Rating (I <sub>th</sub> )   | 400A                        |
| Intermittent Current Rating:  |                             |
| 30% Duty  | 730A                        |
| 40% Duty  | 630A                        |
| 50% Duty  | 565A                        |
| 60% Duty  | 515A                        |
| 70% Duty  | 480A                        |
| Rated Fault Current Breaking Capacity (I <sub>cn</sub> ) 5ms Time Constant: (in accordance with UL583*) |                             |
| RW200   | 1500A at 96V                |
| RW200N  | 1500A at 48V                |
| Maximum Recommended Contact Voltages (U <sub>e</sub> ):   |                             |
| RW200   | 96V D.C.                    |
| RW200N  | 48V D.C.                    |
| Typical Voltage Drop per pole across New Contacts at 400A:  | 40mV                        |
| Mechanical Durability   | >5 x 10 <sup>6</sup> Cycles |
| Coil Voltage Available (U <sub>c</sub> ) (Rectifier board required for A.C.)                            | From 6 to 240V D.C.         |
| Coil Power Dissipation:   |                             |
| Highly Intermittent Rated Types   | 60 - 80 Watts               |
| Intermittently Rated types  | 30 - 60 Watts               |
| Prolonged Rated Types   | 21 - 30 Watts               |
| Continuously Rated Types  | 13 - 21 Watts               |
| Maximum Pull-In Voltage (Coil at 20° C) Guideline:  |                             |
| Highly Intermittent Rated types (Max 25% Duty Cycle)  | 60% U <sub>s</sub>          |
| Intermittently Rated types (Max 70% Duty Cycle)   | 60% U <sub>s</sub>          |
| Prolonged Operation (Max 90% Duty Cycle)  | 60% U <sub>s</sub>          |
| Continuously Rated Types (100% Duty Cycle)  | 66% U <sub>s</sub>          |
| Drop-Out Voltage Range  | 10 - 20% U <sub>s</sub>     |
| Typical Pull-In Time (N/O Contacts to Close):   | 40ms                        |
| Typical Drop-Out Time (N/O Contacts to Open):   |                             |
| Without Suppression   | 10ms                        |
| With Diode Suppression  | 100ms                       |
| With Diode and Resistor (Subject to resistance value)   | 30ms                        |
| Typical Contact Bounce Period   | 3ms                         |
| Operating Ambient Temperature   | -40°C to +60°C              |
| Guideline Contactor Weight:   |                             |
| RW200N  | 1300 gms                    |
| With Auxiliary  | + 20 gms                    |
| With Blowouts   | + 50 gms                    |

| Auxiliary Details                |    |
|----------------------------------|----|
| Auxiliary Thermal Current Rating | 5A |

| Auxiliary Contact Switching Capabilities (Resistive Load): |        |
|--|--------|
| RW200C   | RW200A |
| 5A at 24V D.C.   |        |
| 2A at 48V D.C.   |        |
| 0.5A at 240V D.C.  |        |

| Advised Connection Sizes for Maximum Continuous Current |   |
|---|---|
| Copper busbar   | 260mm <sup>2</sup> [0.40inch <sup>2</sup> ] |
| Cable   | Rated suitable for Application              |

**Key:** ▲ = Uninterrupted

**Note:** Where applicable values shown are at 20° C

\* Please check our web site for product UL status

• Performance data provided should be used as a guide only. Some de-rating or variation from figures may be necessary according to application.

• Thermal current ratings stated are dependant upon the size of conductor being used

• For further technical advice email: [technical@albrightinternational.com](mailto:technical@albrightinternational.com)

• Albright reserve the right to change data without prior notice

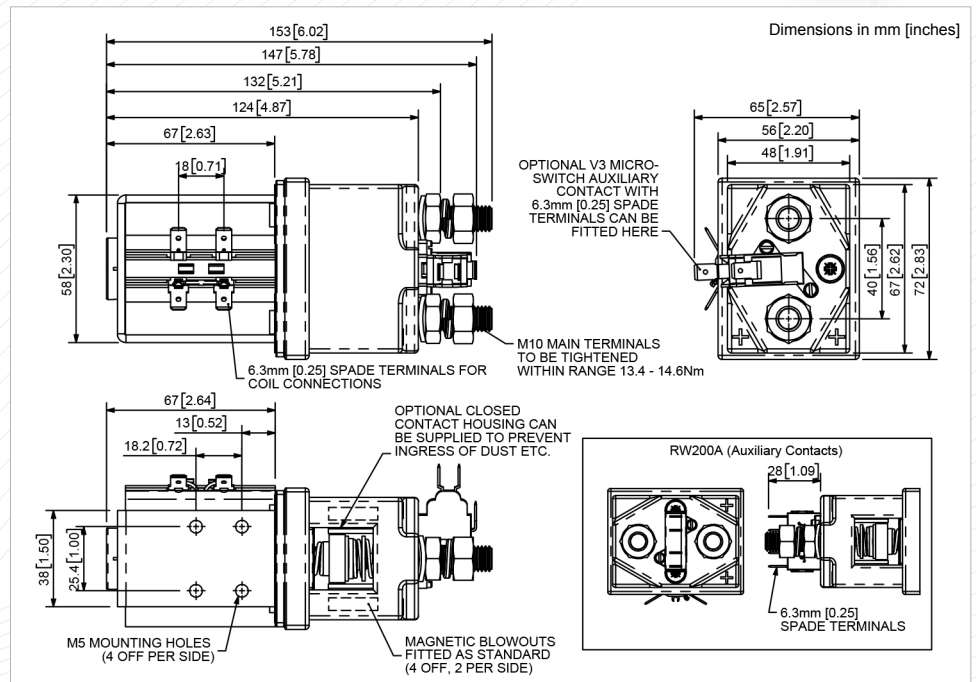
The Reduced Silver series are suitable for applications where infrequent switching is specified. In such applications the degradation of the tip is minimal and therefore a higher volume of silver is unnecessary. Developed for Uninterrupted current applications the RW200 is typically used in line contactors and Power Distribution Systems.

- Uninterrupted current - no or infrequent load switching requirements (maintains a lower contact resistance).

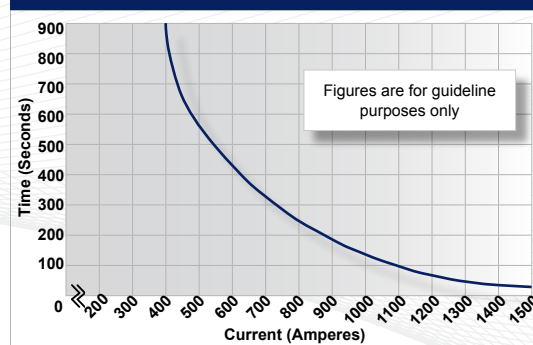
The RW200 features single pole single throw, double breaking main contacts with silver alloy tips, which are weld resistant, hard wearing and have excellent conductivity. The RW200 has M8 stud main terminals and 6.3mm spade coil connections. It can be mounted via M4 tapped holes or mounting brackets – either supplied fitted, or as separate items. Mounting can be horizontal or vertical, when vertical the M8 contact studs should point upwards. If the requirement is for downwards orientation we can adjust the contactor to compensate for this. Please note Normally Closed contacts are not suited to make and break load.



RW200



RW200 Contactor Performance



Contact Performance Key:

— Uninterrupted Current

RW200 Available Options

| General                                       |                                     | Suffix |
|---|-------------------------------------|--------|
| Auxiliary Contacts                            | <input type="checkbox"/>            | A      |
| Auxiliary Contacts - V3                       | <input type="checkbox"/>            | C      |
| Magnetic Blowouts†                            | <input checked="" type="checkbox"/> |        |
| Magnetic Blowouts - High Powered†             | <input type="checkbox"/>            |        |
| Armature Cap                                  | <input checked="" type="checkbox"/> |        |
| Mounting Brackets (See Stud Series Catalogue) | <input type="checkbox"/>            |        |
| Magnetic Latching† (Not fail safe)            | <input type="checkbox"/>            | M      |
| Closed Contact Housing‡                       | <input type="checkbox"/>            |        |
| Environmentally Protected IP66                | <input checked="" type="checkbox"/> |        |
| EE Type (Steel Shroud)                        | <input type="checkbox"/>            | EE     |
| Contacts                                      |                                     |        |
| Textured Tips                                 | <input type="checkbox"/>            | T      |
| Silver Plating                                | <input checked="" type="checkbox"/> |        |
| Coil  |                                     |        |
| AC Rectifier Board (Fitted)                   | <input type="checkbox"/>            |        |
| Coil Suppression†                             | <input type="checkbox"/>            |        |
| Flying Leads                                  | <input type="checkbox"/>            | F      |
| Manual Override Operation                     | <input type="checkbox"/>            |        |
| M4 Stud Terminals                             | <input checked="" type="checkbox"/> |        |
| M5 Terminal Board                             | <input type="checkbox"/>            |        |
| Vacuum Impregnation                           | <input type="checkbox"/>            |        |

**Key:**  Optional  Standard  Not Available  X

† Connections become polarity sensitive

‡ Open Housing Available

Connection Diagram

