

# Albright CONTACT

Issue 7

## Albright Celebrates 70 years of Contactor Design and Manufacture

2016 marks the 70th year of business for Albright. To celebrate this milestone we will be hosting an Albright 70th Year event at our facility in Lithuania. This will incorporate a 70th year presentation and celebrations combined with a Sales Conference.

Albright began in 1946 manufacturing specialist switchgear to our customer's designs. By 1955, we were manufacturing our own designs thus establishing the start of the Albright Contactor Range. Over the years, the range of industry leading products has continued to grow to meet customers needs and opportunities in the market. We now offer in excess of 100 types of contactors and emergency disconnect switches with over 10,000 unique part numbers.

The company expansion initially involved supplying our contactors to Europe which began in 1962, followed by breaking into the USA market in 1978.

Our manufacturing capability increased

in 1986 when we opened a 2nd facility in the UK at Whitchurch. Expansion into Europe (Lithuania) and Asia (China) followed in 2008. All our manufacturing facilities operate to the same Albright processes and standards to ensure the high quality and reliability of our products.

To manage sales, along with a sales office in the UK, strategically placed Sales Offices were set up in Japan (1993), France (1999), China (2008) and Germany (2009). An established network of global distributors completes our international coverage.

Albright has always been a company which seeks to improve. Our recent investments in a new laboratory, Design Centre in Germany, the latest technologies for auto testing and visual inspection ensure we maintain industry leading in the design and manufacture of high quality products at competitive prices.

During its 70 years, Albright has built a



reputation for innovative and original designs and excellent standards of manufacture. Coupled with a strong commitment to deliver a first class customer service we remain leaders in our field.

Albright Management would like to take this opportunity to acknowledge the commitment and hard work of all our past and present colleagues, our distributors and the loyalty of our customers which has helped ensure the continuing success of the company.

## Albright International Exhibiting at IMHX

Albright International, on behalf of the Albright group, will be exhibiting at the International Materials Handling Exhibition 2016 (IMHX). IMHX is the UK's premier materials handling and intralogistics event and will be held at The NEC, Birmingham from 13th - 16th September.

Celebrating our 70th year, we have selected this year's IMHX to help commemorate our history of designing and manufacturing D.C. Contactors and Emergency Disconnects. In addition, we

will be introducing our new products, including our new Reduced Silver Range, for the materials handling industry.

Albright contactors are designed to be used in a variety of materials handling applications including forklift trucks, pallet stackers and AGVs. Furthermore, we can design and manufacture custom-made contactors to meet the unique requirements of our customers.

For further details on IMHX 2016 refer to the official website: [www.imhx.net](http://www.imhx.net)



## Enter the Dragon: Innovative Switches for Chinese Market



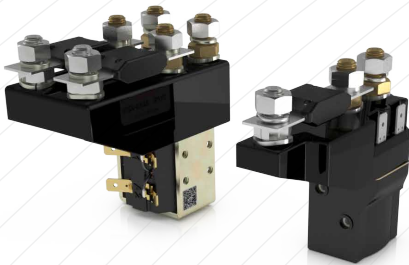
In response to customer demand and specific to the low cost domestic Chinese market, we are introducing 3 new contactor types in the 100, 200 and 400 ampere categories.

Our new Dragon switches are a unique and innovative design. The SE100 rated at 100 amperes, SE200 rated at 200 am-

peres and SE400 rated at 400 amperes are a compact solution suitable for telecommunication applications.

Competitively priced, our Dragon switches are a high quality option to the current market alternatives. For more information, please contact our technical department.

## SW82 and SU60 Now Available with Integral Fuse Option



As an extension to our existing integral fuse contactor options we can now provide the SW82 and SU60 with integral fuse capability as well as the existing SW80, SD200 and SD300.

The integral fuse option offers the ad-

vantage of reducing connection points, allowing the direct connection to fuse and contactor without a separate cable.

As this is an option to these contactors, the type numbers remain the same with no additional prefix required.

## New High Speed Camera Technology to Aid Lab Testing



As part of our ongoing investment, Albright have acquired high speed camera technology to assist with our contactor development. This provides outstanding high speed colour imaging with a small and lightweight camera system. The system provides a resolution of 1280 x 1024 pixels at frame rates up to 4,000 frames per second (fps), and reduced resolution all the way up to 800,000 fps.

Sophisticated motion tracking software enables us to record the displacement, velocity and acceleration of the moving parts within our products during operation, allowing synchronised play back and analysis of both image and graph data. The new high speed camera enhances our understanding of contactor performance and arcing conditions.

## Albright Deutschland Exhibiting this Summer at CeMAT



CeMAT is the primary trade fair for the intralogistics and supply chain management industries. With a long history in supplying the Materials Handling industry.

Albright Deutschland will be exhibiting at the CeMAT Exhibition on behalf of the Albright Group. This year CeMAT is being held from 31st May to 3rd June at Hannover, Germany.

Albright contactors are designed to be used in a range of products servicing the materials handling industry including forklift trucks, pallet stackers & AGVs.

As a designer and manufacturer of contactors, we are able to offer bespoke design solutions that are custom-made to meet specific requirements of our customers.

For further information on CeMat 2016 refer to the official website: [www.cemat.de](http://www.cemat.de)

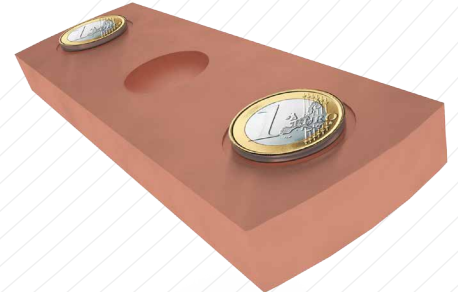
## Introducing Our Reduced Silver Series Contactors

Our new Reduced Silver Series offer a lower cost alternative to our standard contactors. The Reduced Silver series are suitable for applications where infrequent switching is specified. In such applications the degradation of the tip is minimal and therefore a higher volume of silver is unnecessary.

The Reduced Silver series follow the existing design of our standard contactors but with a reduction in silver content.

The standard auxiliary for the Reduced Silver Series is the 'C' type although the 'A' is available. Silver plating on the main contacts is an optional extra for the busbar contactors in this series.

The Reduced Silver Series, denoted by an R (instead of a S), currently includes the following types; RW80, RW82, RW180, RW190, RU80, RU280, RW150, RW250, RW300, RW400, RW500, RW560, RW800, RW1000 and RW1500.



## Albright International Exhibiting at METS

**METS** MARINE EQUIPMENT  
**TRADE** TRADE SHOW  
15-16-17 NOV 2016  
AMSTERDAM

Albright International, on behalf of the Albright group, are exhibiting at the Marine Equipment Trade Show (METS) which is being held from 15th – 17th November in Amsterdam. METS is the world's largest trade exhibition of equipment, materials and systems for the international marine leisure industry.

Albright contactors are designed to be used on a variety of marine industry applications such as bow thrusters, windlasses, anchor winches, dual battery & battery isolation systems. Furthermore, our contactors can also be used for hydraulic power packs, engine starting & standby power and lighting applications.

As well as our established contactors for these type of applications, we can also supply bespoke contactors to meet customers specific requirements.

For further information on METS 2016 refer to the official website: [www.metstrade.com](http://www.metstrade.com)

PROUD MEMBER OF  
**BRITISH MARINE**  
LEADING THE INDUSTRY

## New ED300 and ED520 Switches Now Available

Introducing the latest additions to our Emergency Disconnect Series, the ED300 and ED520 are new Emergency Disconnect switches designed to provide a rapid means of disconnecting batteries or other power supplies in the event of serious electrical faults.

Rated at 300 and 500 amperes respectively, the ED300 has a single pole, single throw configuration whilst the high current ED520 has a double pole single throw configuration. Both are compact, low cost switches primarily intended for the Power Distribution and Electric Vehicle markets. They are capable of safely rupturing full load battery currents in the event of an emergency.

Both the ED300 and ED520 are manually operated devices with an over-centre spring mechanism which provides a snap action for both opening and closing the main contacts.

The ED300 and ED520 are original designs from Albright, easy to install and secured with supplied M5 posidrive mounting screws, and are competitively priced.

For further information refer to the ED300 & ED520 Catalogue Data Sheets available on our web site or contact our Technical Department.



## Albright International Exhibiting at Intelec, USA

Albright International will be exhibiting at INTELEC 2016 which takes place 23rd – 27th October in Austin, Texas, USA. The annual International Telecommunications Energy Conference provides an opportunity for the sharing of knowledge and ideas on communications, energy systems and related equipment and is a regular event in our exhibition

calendar.

Albright are a key global supplier of D.C. Contactors, designing and manufacturing a wide range of products suitable for telecommunications and power distribution systems. Rated from 80 up to 2400 Amps with UL and CCC recognition, our contactors are a reliable option. In

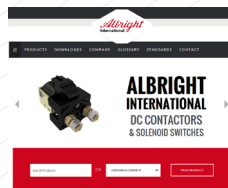
addition, we can offer bespoke contactors designed and built to our customer requirements.

For further information on INTELEC 2016 refer to the official website: [www.intelec2016.org](http://www.intelec2016.org)



## Relaunch of Web Site

We have invested in a new web site to improve our online services to our customers. New features include product option filters to help you select a contactor type. In addition, new resources have been added to assist in your product selection as well as the familiar



technical information, we also have a features and downloads section available from the product page. Our website will continue to be developed in order to provide a first class resource.

## Albright China Exhibiting at CIIF



Albright China, on behalf of the Albright group, will be exhibiting at the China International Industry Fair (CIIF) which is taking place 1st – 5th November 2016 in Shanghai. The China International Industry Fair is one of the key events for equipment manufacturers in China providing an excellent opportunity for furthering communications and trade in this sector.

Albright contactors are designed to be utilised in a range of equipment manufacturers applications such as AGVs, Frequency converters, wind turbines and electric vehicles. In addition, Albright are able to offer custom-made contactors to meet the particular requirements of customers.

For more information concerning the exhibition, please refer to the official web site: [www.ciif-expo.com](http://www.ciif-expo.com)

### ALBRIGHT INTERNATIONAL LTD

Evingar Trading Estate  
Ardglen Road  
Whitchurch  
Hampshire  
RG28 7BB  
UK

General Tel: +44 (0)1256 893060

General Fax: +44 (0)1256 893562

Sales Tel: +44 (0)1256 890030

Sales Fax: +44 (0)1256 890043

Email: [sales@albrightinternational.com](mailto:sales@albrightinternational.com)

[technical@albrightinternational.com](mailto:technical@albrightinternational.com)

Web site: [www.albrightinternational.com](http://www.albrightinternational.com)



## About Albright

Albright International is a privately owned company, founded in 1946. Initially, the company manufactured specialist switch gear to customers' designs, beginning the manufacture of the Albright contactor range in 1955 which started the strong tradition of designing and manufacturing its own products.

Albright International operates from our Head Office at Whitchurch in the south of England, in modern well-equipped offices and factories. Additionally, Albright has two wholly owned factories in China and Lithuania, manufacturing to our high quality standards. Sales offices in France, Germany and Japan complete our international coverage.

With a network of worldwide agents and distributors we can evaluate new applications, provide technical support and supply our original design D.C. contactors and spares throughout the world.

Now celebrating our 70th year in business designing and manufacturing D.C. Contactors and Emergency Disconnects.

