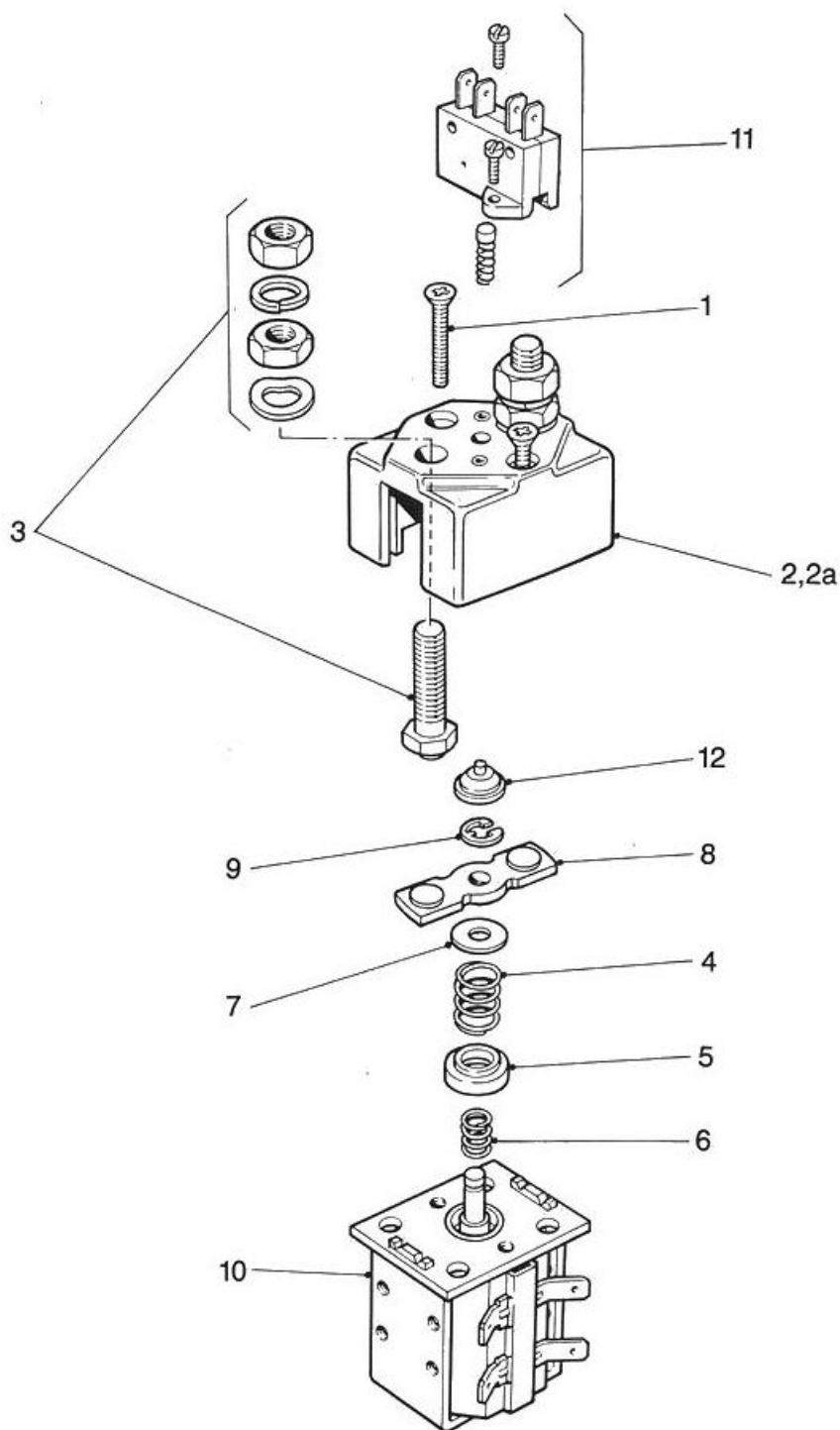




SPARE PARTS FOR SOLENOID SWITCH TYPE SW85



ALBRIGHT INTERNATIONAL LTD.

125 Red Lion Road, Surbiton, Surrey, KT6 7QS, England.

Tel: +44 (0) 20 8390 5357 Fax: +44 (0) 20 8390 1927

Email: Technical: technical@albright.co.uk Sales: sales@albright.co.uk

Sept 07

Spare parts for Solenoid Switch type SW85

Suffix 'A' indicates auxiliary contacts
Suffix 'B' indicates magnetic blowouts
Suffix 'L' indicates large contact tips

SW85			
Item	Part No.	Description	Quantity
1	2070-19	Top Cover Fixing Screw	2
2	2070-4	Top Cover Moulding (SW85)	1
	2070-4B	Top Cover Moulding (SW85A)	1
	2070-58	Top Cover Moulding (SW85B)	1
	2070-58D	Top Cover Moulding (SW85AB)	1
2a	2070-4D	Top Cover Moulding Enclosed – optional (SW85)	1
	2070-58H	Top Cover Moulding Enclosed – optional (SW85A)	1
	2070-58F	Top Cover Moulding Enclosed – optional (SW85B)	1
	2070-58K	Top Cover Moulding Enclosed – optional (SW85AB)	1
3	2070-46	Fixed Contact Assembly	2
	2070-85	Fixed Contact Assembly (SW85L)	2
4	2070-16G	Return Spring	1
5	2070-79	Return Spring Insulator	1
6	2070-9	Contact Spring	1
7	2070-36	Spring Insulating Washer	1
8	2070-177	Moving Contact	1
	2070-178	Moving Contact (SW85L)	1
9	2028-642	Circlip	1
10*	–	Assembled Coil and Magnet Frame	1
11	2070-124A	Auxiliary Contact Kit (SW85A)	1
12	2070-15	Insulator (SW85A)	1
13	2070-388	Contact Kit (SW85)	1
	2071-55	Contact Kit (SW85L)	1

* When ordering these items please state full type number of contactor for which items are required.

Note: M8 nuts to item 3 should be tightened to a torque of 8 to 9.5 Nm.

ALBRIGHT INTERNATIONAL LTD.

125 Red Lion Road, Surbiton, Surrey, KT6 7QS, England.

Tel: +44 (0) 20 8390 5357 Fax: +44 (0) 20 8390 1927 Email: Technical: technical@albright.co.uk Sales: sales@albright.co.uk

Sept 07