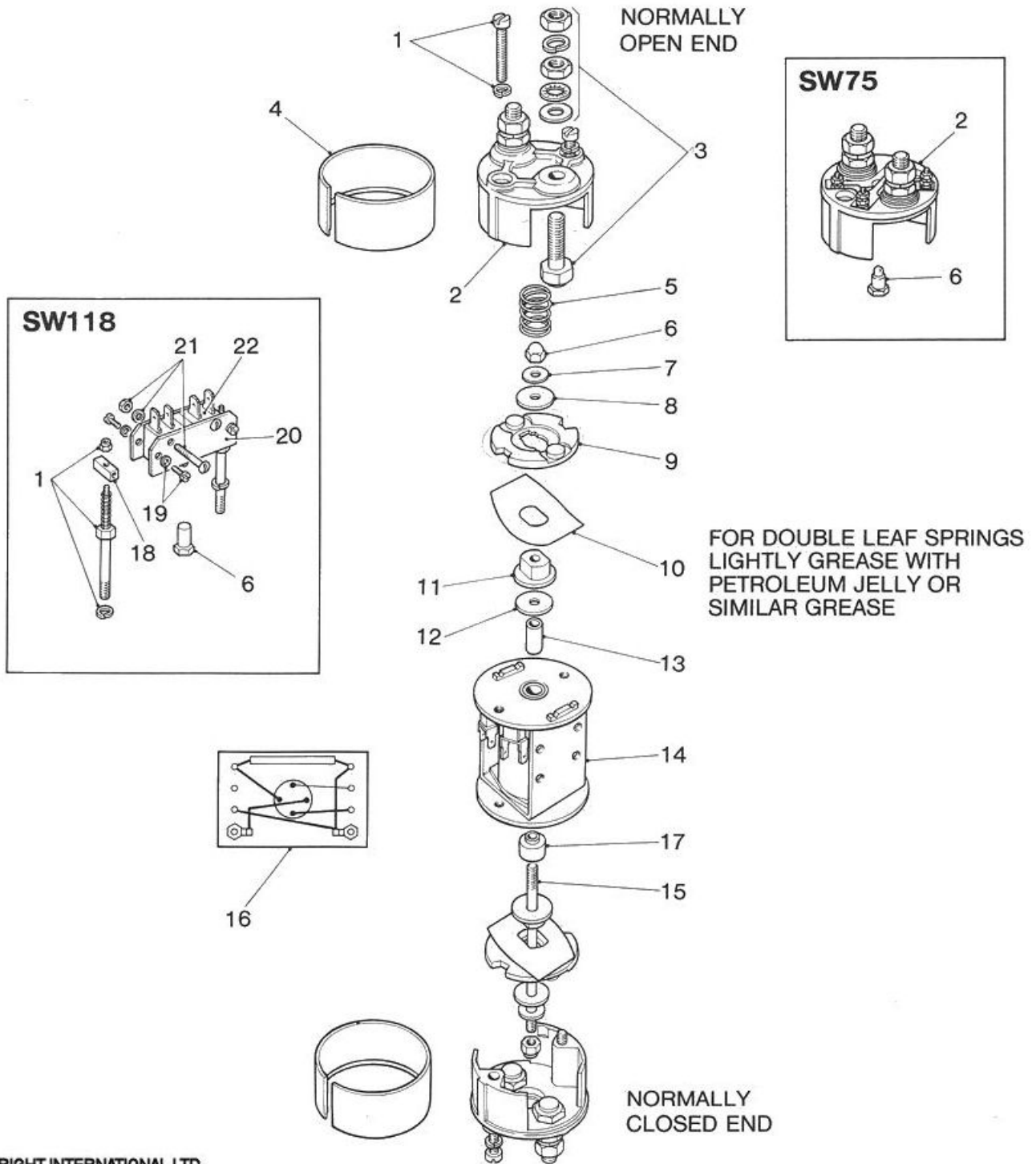


SOLENOID SWITCH TYPES SW65A, SW75 and SW118



Spare parts for Solenoid Switch types SW65A, SW75 and SW118

Item	Part Number and Description	Quantity per Switch		
		SW65A	SW75	SW118
1	Cover Screw c/w Washer			
	2028-513	4	4	2 N'C End
	2028-466	-	-	2 N'O End
2	Top Cover			
	2028-23A	2	1 N'C End	1 N'C End
	2028-23B	-	-	1 N'O End
	2028-247 C.W. Auxiliary Contacts	-	1 N'O End	-
3	Terminal Contact Assembly			
	2028-512	4	4	4
4	Spring Cover			
	2028-563	2	2	2
5	Return Spring			
	(Please state full type number of switch) e.g. SW65A-42M	1	1	1
6	Armature Bolt Nut			
	2028-586 (N'O End)	1	-	-
	2028-151 (N'O End)	-	1	-
	2028-454 (N'O End)	-	-	1
	2028-164 (N'O End)	-	-	1
	2065-68A (N'C End)	1	1	1
7	Locating Washer			
	2028-10B	-	2	2
8	Contact Retaining Washer			
	2028-11B	2	2	2
9	Moving Contact			
	2028-48	2	2	2
10	Contact Spring			
	2028-43 (2lb 13oz)	2	2	-
	2028-43B (1lb 12oz) N'O End	-	-	2
	2028-43B (1lb 12oz) N'C End	-	-	1
11	Contact Bush			
	2045-13 (N'O End)	1	1	-
	2028-24A (N'C End)	1	1	1
	2028-24A (N'O End)	-	-	1
12	Stop Washer			
	2028-10A (N'O End)	1	1	1
13	Distance Piece			
	2028-51	-	-	1
	2028-51C	1	1	-
14	Assembled Coil and Magnet Frar 2114-21			
	(Please state full type number of switch) eg SW65A-42M	1	1	1
15	Armature Bolt			
	2045-14	1	1	1
16	Rectifier Assembly			
	(Please state full type number of switch) eg SW65A-37M	As Req'd	As Req'd	As Req'd
17	Armature Extension			
	2045-49	1	1	1
18	Micro Switch Spacer			
	2028-453	-	-	2
19	Fixing Screw c/w Washer			
	2028-483	-	-	4
20	Insulator			
	2028-455	-	-	2
21	Micro Switch Fixing Screw c/w nut and washer			
	2028-482	-	-	2
22	Micro Switch			
	2114-21	-	-	1