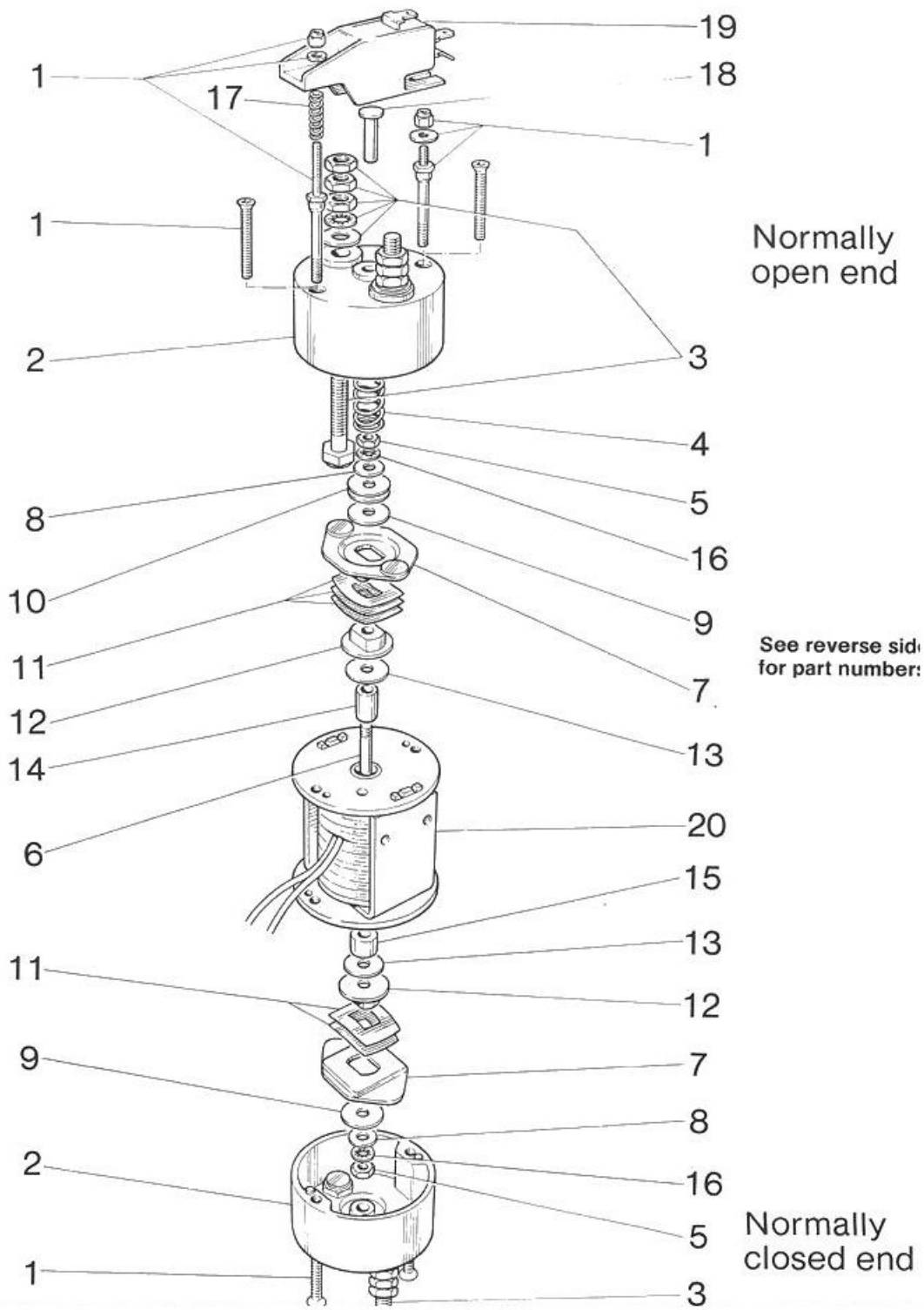


## SOLENOID SWITCH TYPE SW.129 & SW.129A



## Spare Parts for Solenoid Switch Types SW.129 & SW.129A

SW.129-1 to SW.129-17 inclusive

Item	Part No	Switch Type	No off	Item	Part No	Switch Type	No off
1	<b>COVER SCREWS</b>			11	<b>CONTACT SPRING</b>		
	2028-236D	SW.129 std.	4		2110-25A	SW.129 & 129A std. N'O end	3
	2028-236D	SW.129A N'C end	2		2110-25A	SW.129 & 129A std. N'C end	2
	2126-42B (long)	SW.129A N'O end	1				
	2126-42 (short)	SW.129A N'O end	1				
2	<b>BAKELITE COVER</b>			12	<b>CONTACT BUSH</b>		
	2110-29	SW.129 std.	2		2110-8A	SW.129 & 129A std.	2
	2110-29	SW.129A N'C end	1				
	2110-29A	SW.129A N'O end	1	13	<b>STOP WASHER</b>		
3	<b>TERMINAL CONTRACTS (FIXED) with nuts and washers</b>				2110-64	SW.129 & 129A std.	2
	2110-43	SW.129 & 129A std.	4	14	<b>DISTANCE PIECE</b>		
4	<b>RETURN SPRING</b>				2110-66A	SW.129 & 129A std.	1
	2114-19	SW.129 & 129A std.	1	15	<b>ARMATURE EXTENSION</b>		
	2126-12	SW.129-2, 7.	1		2126-46	SW.129 & 129A std.	1
5	<b>ARMATURE BOLT NUT</b>			16	<b>LOCK WASHER</b>		
	2126-49	SW.129 & 129A std.	2		2126-50	SW.129 & 129A std.	2
6	<b>ARMATURE BOLT</b>			17	<b>MICRO-SWITCH ADJUSTING SPRING</b>		
	2110-67	SW.129 & 129A std.	1		2073-81A	SW.129A N'O end std.	1
7	<b>MOVING CONTACT</b>			18	<b>MICRO-SWITCH OPERATING PLUNGER</b>		
	2110-20	SW.129 & 129A std.	2		2028-125C	SW.129A N'O end std.	1
8	<b>WASHER</b>			19	<b>MICRO-SWITCH ASSEMBLY</b>		
	2110-64A	SW.129 & 129A std.	2		2137-3	SW.129A N'O end std.	1
9	<b>INSULATING WASHER</b>			20	<b>ASSEMBLED MAGNET FRAME AND COIL</b>		
	2110-63	SW.129 & 129A std.	2		STATE SYMBOL No. OF SWITCH		1
10	<b>RETURN SPRING ADJUSTING WASHER</b>						
	2110-63A	SW.129 & 129A std.	As required				