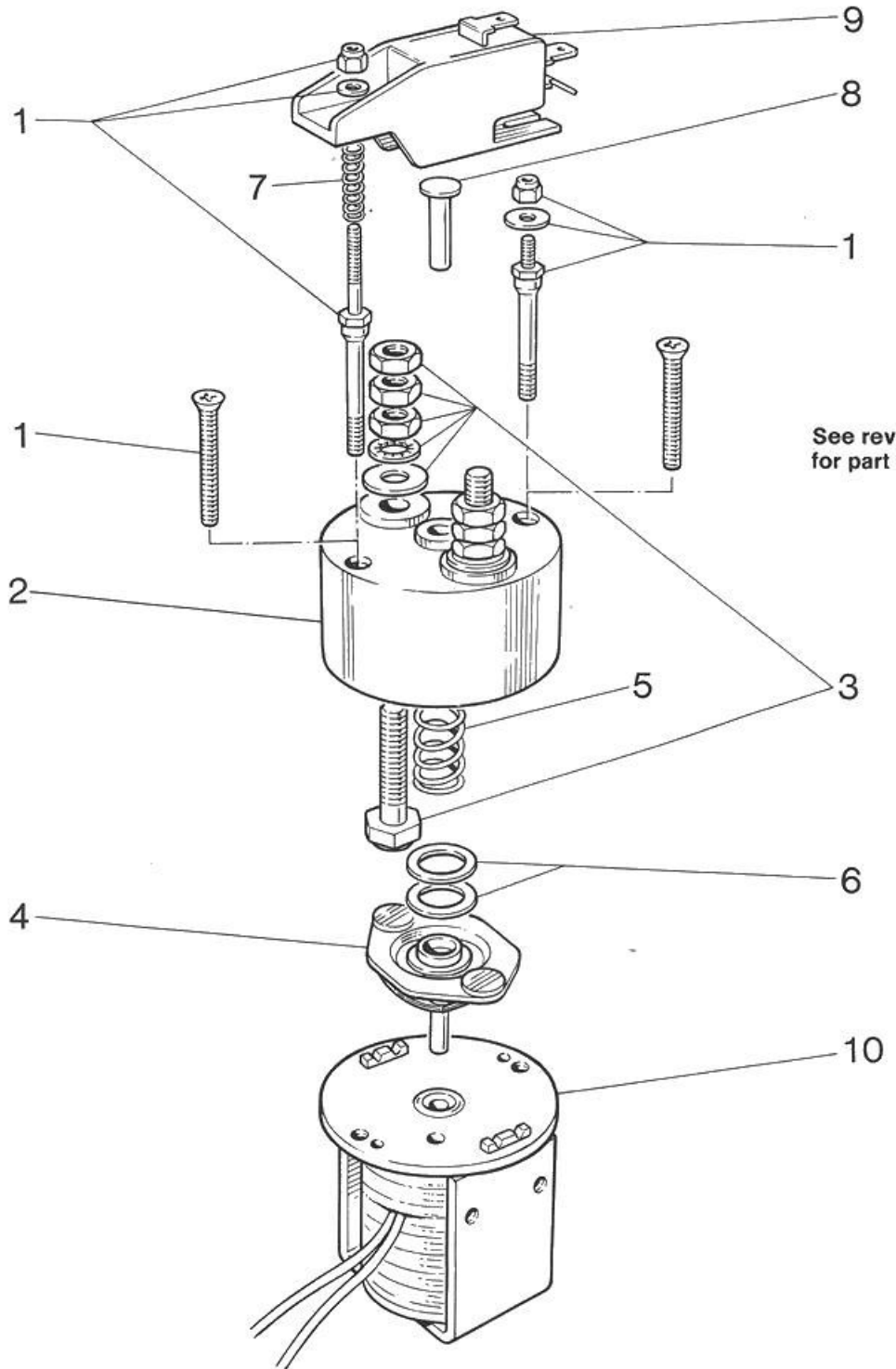


Spare Parts for Solenoid Switch Types SW.128 & SW.128A



See reverse side
for part numbers

Spare Parts for Solenoid Switch Types SW.128 & SW.128A

SW.128-1 to SW.128A-24 inclusive

<i>Item</i>	<i>Part No</i>	<i>Switch Type</i>	<i>No off</i>
1	COVER SCREWS		
	2028-236D	SW.128 std.	2
	2126-42B (long)	SW.128A std.	1
	2126-42 (short)	SW.128A std.	1
2	BAKELITE COVER		
	2110-29	SW.128 std.	1
	2110-29A	SW.128A std.	1
3	TERMINAL CONTACTS (fixed) with nuts and washers		
	2110-43	SW.128 & 128A std.	2
4	MOVING CONTACT ASSEMBLY		
	2126-11	SW.128 & 128A std.	1
	2126-11B	SW.128-23	1
5	RETURN SPRING		
	2126-12	SW.128 & SW.128A std.	1
	2126-12A	SW.128A-24	1
	2126-45	SW.128-23	1
6	RETURN SPRING ADJUSTING WASHER		
	2126-18	SW.128 & 128A std.	As required
7	MICRO-SWITCH ADJUSTING SPRING		
	2073-81A	SW.128A std.	1
8	MICRO-SWITCH OPERATING PLUNGER		
	2028-125A	SW.128A std.	1
9	MICRO-SWITCH ASSEMBLY		
	2137-3	SW.128A std.	1
10	ASSEMBLED MAGNET FRAME AND COIL ETC		
	STATE SYMBOL No. OF SWITCH		1

ALBRIGHT INTERNATIONAL LTD.

125 Red Lion Road, Surbiton, Surrey, KT6 7QS, England.

Tel: +44 (0) 20 8390 5357 Fax: +44 (0) 20 8390 1927 Email: Technical: technical@albright.co.uk Sales: sales@albright.co.uk

Sept 07