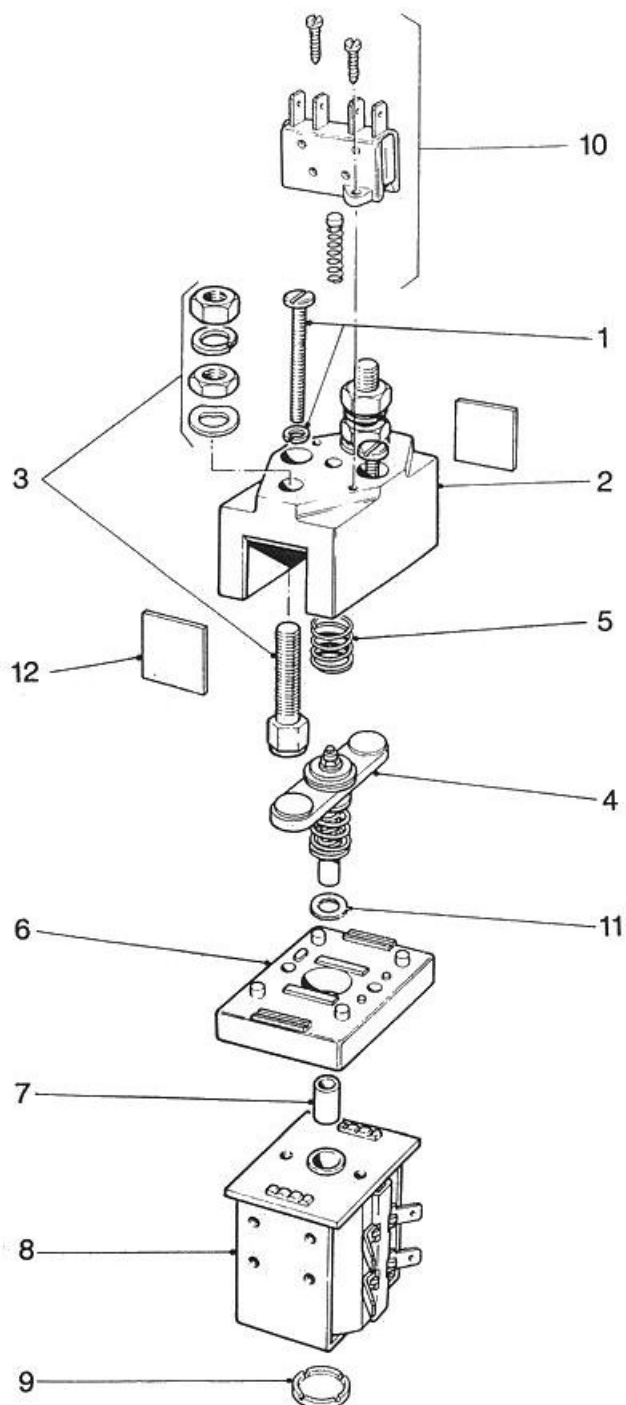




SPARE PARTS FOR SOLENOID SWITCH TYPE SW100



Spare parts for Solenoid Switch type SW100

Suffix 'A' indicates with auxiliary contacts

Suffix 'B' indicates with magnetic blowouts

SW100			
Item	Part No.	Description	Quantity
1	2159-22	Top Cover Screw with Lock Washer	2
2	2159-4	Top Cover Moulding (SW100)	1
	2159-4B	Top Cover Moulding (SW100A)	1
	2159-19	Top Cover Moulding (SW100B)	1
	2159-19B	Top Cover Moulding (SW100AB)	1
2 & 3	2159-20	Top Cover Moulding with fixed contacts 2159-18 (SW100)	1
	2159-20D	Top Cover Moulding with fixed contacts 2159-18 (SW100A)	1
	2159-20B	Top Cover Moulding with fixed contacts 2159-18 (SW100B)	1
	2159-20F	Top Cover Moulding with fixed contacts 2159-18 (SW100AB)	1
3	2159-18	Fixed Contact with nuts and washers	2
4	2159-23	Moving Contact Assembly complete with contact springs, bushes and insulated parts	1
5*	2028-30	Return Spring	1
6	2159-5	Top Cover Base Moulding	1
7	2159-9	Moving Contact Plunger, included in Moving Contact Assembly 2159-23	1
8*	2159-38	Assembled Coil and Magnet Frame	1
9	2180-246	End Cap	1
10	2159-117	Auxiliary Contact Kit (SW100A)	1
11	2159-177	Centre Plunger Insulator, included in Moving Contact Assembly 2159-23	1
12	2159-40	Dust Shield – optional	2
13	2159-98	Spare Contact Kit	1

* When ordering these items please state full type number of contactor for which items are required.

Note: M8 nuts to item 3 should be tightened to a torque of 8 to 9.5 Nm.

ALBRIGHT INTERNATIONAL LTD.

125 Red Lion Road, Surbiton, Surrey, KT6 7QS, England.

Tel: +44 (0) 20 8390 5357 Fax: +44 (0) 20 8390 1927 Email: Technical: technical@albright.co.uk Sales: sales@albright.co.uk

Sept 07