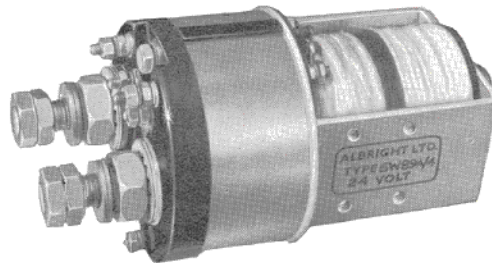


## D. C. SOLENOID SWITCH TYPE SW 89 & 89A

### WEIGHT

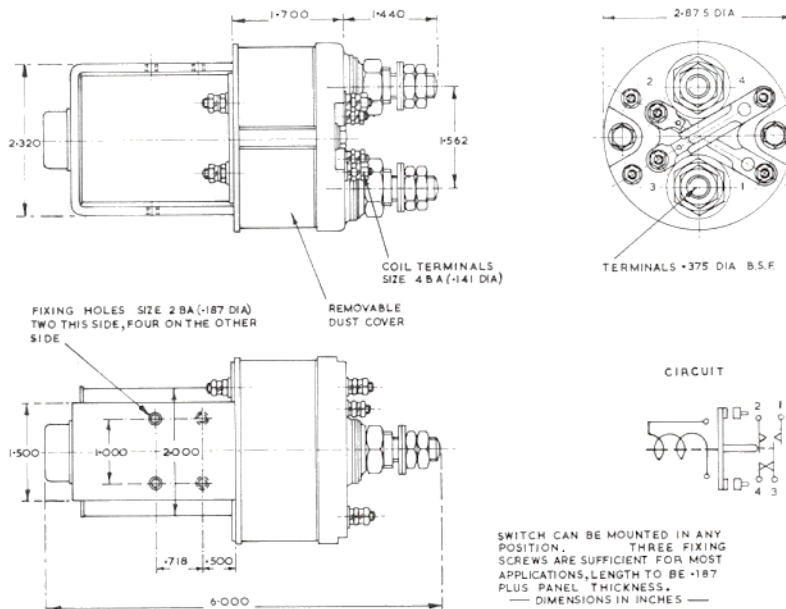
3 LBS. — 1.4 KG.

SW89 — Plain on/off.  
 SW89A — as above but  
 fitted with 5 amp auxiliary  
 contacts



### RECOMMENDED RATINGS

24 volts —  
 200 amps continuous  
 300 amps intermittent  
 80 volts —  
 45 amps continuous  
 70 amps intermittent  
 Other voltages pro-rata.



### METRIC EQUIVALENTS

Inches	M/M
6.000	152.4
2.875	73.0
2.320	57.9
2.000	50.8
1.700	43.2
1.562	39.7
1.500	38.1
1.440	36.6
1.000	25.4
.718	18.3
.500	12.7
.375	9.5
.187	4.8
.141	3.3

This single pole, on-off solenoid switch has double breaking main contacts and is suitable for the remote control of heavy currents. The switch, which is fully tropicalised, is also suitable for engine starting and will handle currents of 1000 amps on 24 volts for periods of half a minute. Except for size and current carrying capacity it is similar to the SW62A type.

The operating coil can be wound for voltages from 6 to 240 and those for voltages of 100 and above are vacuum impregnated.

Shouldered terminals are provided to ensure good contact for connections.

Silver Tungsten contacts are used as standard but other materials are available for special applications.