

DOUBLE POLE CHANGEOVER D.C. SOLENOID SWITCHES

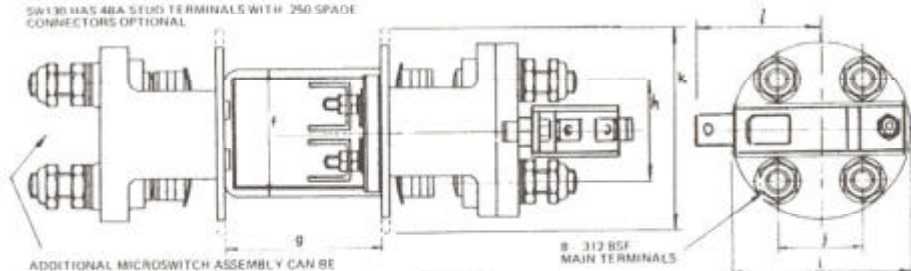
SW81, SW130: DOUBLE POLE
CHANGEOVER TYPES
SW81A, SW130A: DOUBLE POLE
CHANGEOVER TYPES WITH
5 AMPERE AUXILIARY
CONTACTS

WEIGHTS

SW81 (A) — 2.375 lbs (1.08 Kg)

SW130 (A) — 4.06 lbs (1.84 Kg)

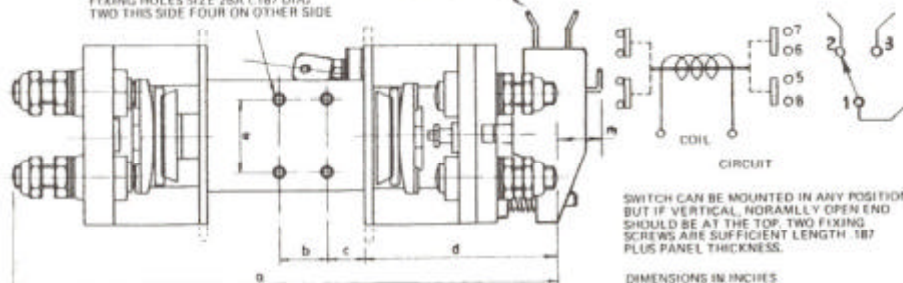
SW81 HAS 350 SPADE CONNECTORS FOR
COIL TERMINALS (ANGLED AT 30° TO SWITCH AXIS)
SW130 HAS 48A STUD TERMINALS WITH 350 SPADE
CONNECTORS OPTIONAL



ADDITIONAL MICROSWITCH ASSEMBLY CAN BE
FITTED TO NORMALLY CLOSED END

250 SPADE
CONNECTORS

FIXING HOLES SIZE 2BA (187 DIA)
TWO THIS SIDE FOUR ON OTHER SIDE



DIMENSIONS IN INCHES

RECOMMENDED RATINGS

At 24 volts D.C.

SW81(A): 100 amperes continuous
150 amperes intermittent

SW130(A): 150 amperes continuous
200 amperes intermittent

Other ratings according to application
and voltage.

DIMENSION	SW81(A)	SW130(A)
a	7.25	8.544
b	.625	.718
c	.500	.500
d	2.544	3.052
e	1.00	1.00
f	1.75	2.318
g	2.104	2.440
h	1.375	1.375
i	2.50	2.50
j	1.125	1.125
k	2.500	2.812
l	1.293	1.293
m	.20	—

METRIC EQUIVALENTS

Inches	mm	Inches	mm
8.544	—	217.0	1.375
7.250	—	184.2	1.293
3.052	—	77.5	1.125
2.812	—	71.4	1.000
2.554	—	64.9	.718
2.500	—	63.5	.625
2.440	—	62.0	.500
2.318	—	58.9	.250
2.104	—	53.4	.20
1.750	—	44.5	—
			34.9
			32.84
			28.6
			25.4
			18.2
			15.9
			12.7
			6.35
			5.08

These double pole changeover contactors have double breaking main contacts and are suitable for the remote control of heavy currents.

They are particularly suitable for the reversing of shunt or compound wound D.C. motors in place of the more normal pair of single pole changeover contactors. An additional field contactor is required (Type SW62A).

The switches, which are fully tropicalised, are available in two basic sizes and ratings as detailed above and they can be fitted with auxiliary contacts rated at 5 amperes at 24 V.D.C. These auxiliary contacts are available in the following configurations: Microswitch giving changeover operation or two normally open or two normally closed contacts of the leaf type.

The operating coils can be wound for voltages from 6 to 240 D.C. and those for voltages of 100 and above are vacuum impregnated. Continuously rated windings are available if required.

The main contacts on both types can be changed in service and in the case of the SW130(A) this change can be effected without interfering with the main connections.

Silver Cadmium Oxide contacts are used as standard.