

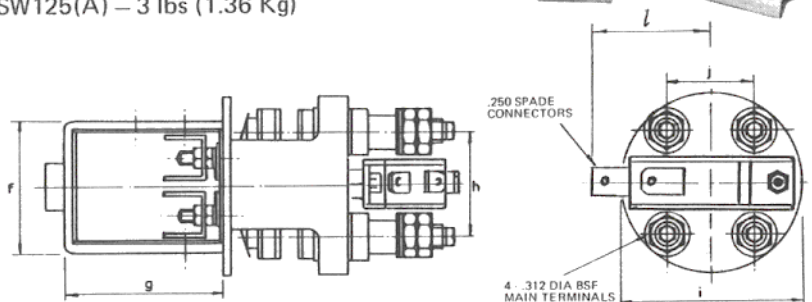
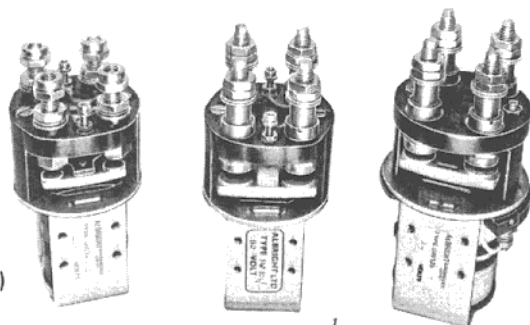
DOUBLE POLE D.C. SOLENOID SWITCHES

SW74, SW106, SW125:
ON/OFF TYPES

SW74A, SW106A, SW125A:
ON/OFF TYPES WITH
5 AMPERE AUXILIARY
CONTACTS

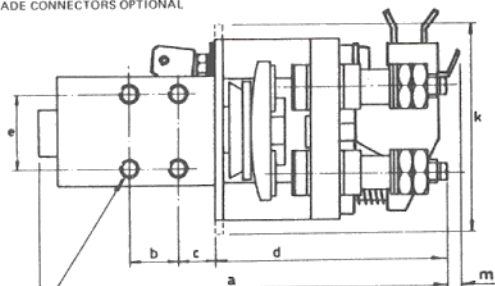
WEIGHTS

SW74(A) — 1.6 lbs (.73 Kg)
SW106(A) — 1.88 lbs (.85 Kg)
SW125(A) — 3 lbs (1.36 Kg)

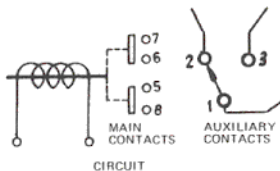


SW74 AND SW106 HAVE .250 SPADE CONNECTORS
FOR COIL TERMINAL (ANGLED AT 10° TO SWITCH
AXIS)

SW125 HAS 4BA STUD TERMINALS WITH .250
SPADE CONNECTORS OPTIONAL



FIXING HOLES SIZE 2BA (.187 DIA)
TWO THIS SIDE
FOUR ON OTHER SIDE



SWITCH CAN BE MOUNTED IN ANY
POSITION. TWO FIXING SCREWS
ARE SUFFICIENT FOR MOST
APPLICATIONS. LENGTH TO BE .187
PLUS PANEL THICKNESS.

DIMENSIONS IN INCHES.

RECOMMENDED RATINGS

At 24 volts D.C.

SW74(A): 100 amperes continuous
150 amperes intermittent

SW106(A): 100 amperes continuous
150 amperes intermittent

SW125(A): 150 amperes continuous
200 amperes intermittent

*Other ratings according to application
and voltage.*

DIM	SW74(A)	SW106(A)	SW125(A)
a	4.908	5.382	5.625
b	.625	.625	.718
c	.500	.500	.500
d	2.554	3.028	3.052
e	1.0	1.0	1.0
f	1.75	1.75	2.318
g	2.104	2.104	2.440
h	1.375	1.375	1.375
i	2.500	2.500	2.500
j	1.125	1.125	1.125
k	2.500	2.500	2.812
l	1.293	1.293	1.293
m	.20	—	—

METRIC EQUIVALENTS

Inches	mm	Inches	mm
5.625	— 142.9	2.104	— 53.4
5.382	— 136.7	1.750	— 44.5
4.908	— 124.7	1.375	— 34.9
3.052	— 77.5	1.293	— 32.84
3.028	— 76.9	1.125	— 28.6
2.812	— 71.4	1.000	— 25.4
2.554	— 64.9	.625	— 15.9
2.500	— 63.5	.500	— 12.7
2.440	— 62.0	.250	— 6.35
2.318	— 58.9	.2	— 5.08

These double pole ON/OFF Solenoid switches have double breaking main contacts and are suitable for the remote control of heavy currents.

The switches, which are fully tropicalised, are available in three basic sizes and ratings as detailed above and they can be fitted with auxiliary contacts rated at 5 amperes at 24 V.D.C. These auxiliary contacts are available in the following configurations: Microswitch giving changeover operation or two normally open or two normally closed contacts of the leaf type.

The operating coils can be wound for voltages from 6 to 240 D.C. and those for voltages of 100 and above are vacuum impregnated. Continuously rated windings are available if required.

The main contacts on all three switches can be changed in service and in the case of the SW106(A) and SW125(A) this change can be effected without interfering with the main connections.

Silver Cadmium Oxide contacts are used as standard.