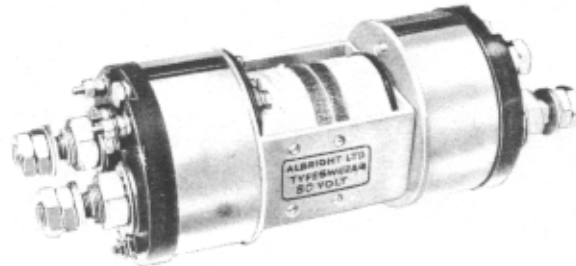


D.C. SOLENOID SWITCH TYPE SW 112 and SW 112A

SW112
— CHANGEOVER SWITCH

SW112A
— as above but with 5 amp.
auxiliary contacts.

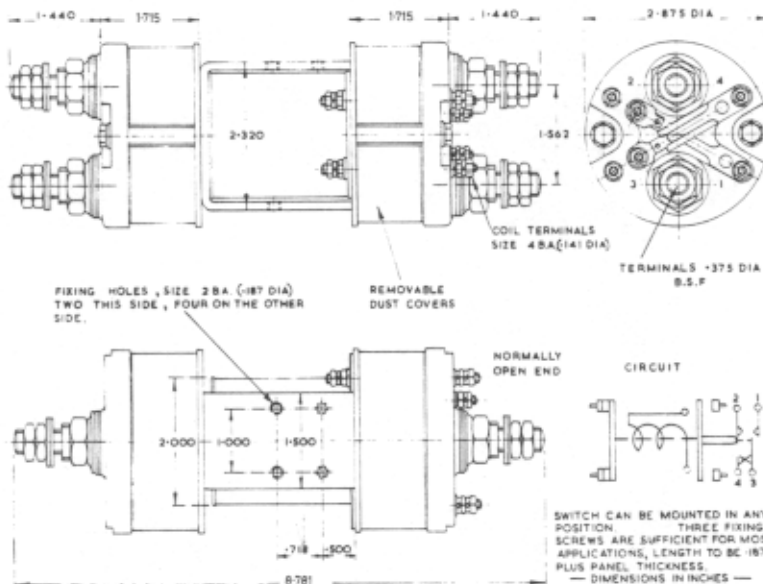
WEIGHT
4.250 lbs. (1.93 Kg)



RECOMMENDED RATINGS
at 24V D.C.

200 amperes continuous
300 amperes intermittent

*Other ratings according
to application and
voltage.*

**METRIC EQUIVALENTS**

Inches	mm
8.781	— 223.0
2.875	— 73.0
2.320	— 57.9
2.000	— 50.8
1.715	— 43.6
1.562	— 39.7
1.500	— 38.1
1.440	— 36.6
1.000	— 25.4
.718	— 18.3
.500	— 12.7
.375	— 9.5
.187	— 4.8
.141	— 3.3

This single pole, change-over solenoid switch has double breaking main contacts and is suitable, when used in pairs, for reversing either series or shunt wound motors. The switch, which is fully tropicalised, is also suitable for use as an isolating switch, to prevent two circuits being operated simultaneously.

The operating coil can be wound for voltages from 6 to 240 and those for voltages of 100 and above are vacuum impregnated. Continuous rated windings are available if required.

Shouldered terminals are provided to ensure good contact for connections.

Silver Tungsten contacts are used as standard but other materials such as Silver Cadmium Oxide or pure Silver can be supplied if required.

Auxiliary contacts are available in the following configurations: one normally open and one normally closed, or two normally open or two normally closed.