

SW225 HEAVY DUTY D.C. CONTACTORS FOR POWER DISTRIBUTION CENTRES

Albright International introduces a new addition for use within the Telecommunications market: **The SW225**

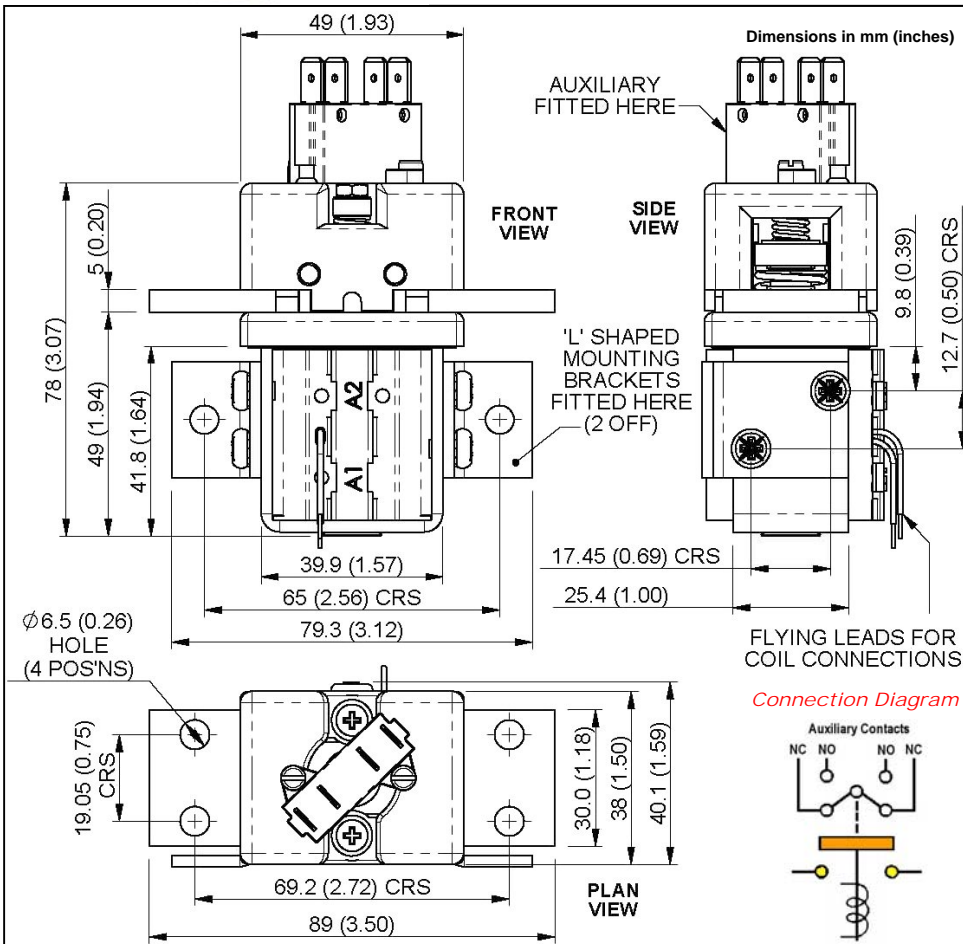


The SW225 has been specifically designed to mount within the confines of a 1U rack. This busmountable compact contactor follows the recognised design of the SW250 series of contactors. For further information, please contact *Albright* International.

- “L” Shape Mounting bracket kits are fitted as a standard option.
- To suit the limitations of space of a 1U rack, the coil connections are supplied as flying leads (up to 125mm).
- Auxiliary Contacts can be fitted as an optional feature.

In addition, the Magnetic Latching option is available for this series which enables the contacts to remain closed whilst consuming no coil power.
(See separate brochure —“Power Consumption Reduction for Albright Contactors”).

These contactor variants are an innovative &



PERFORMANCE DATA

Thermal current Rating (100%): Up to 225 Ampere

Typical Fault Currents that can be ruptured (Resistive Load):

330 Amperes at 60V D.C.

Maximum Recommended Contact Voltages:

60V D.C.

Typical Voltage Drop across New Contacts When new at maximum rated load:

50mV

Mechanical Life:

>1,000,000

Coil Power Dissipation:

Continuously Rated Types:

7 - 13 Watts

Maximum Pull-in Voltage (Coil at 20°C):

Continuously Rated Type:

66%V

Typical Drop-out Voltage:

10-30%V

Typical Pull-in time (contacts to close):

15ms

Typical Drop-out time (contacts to Open):

Without Suppression:

6ms

Typical Contact Bounce Period:

<5ms

Busbar Size:

The minimum copper busbar size for the maximum continuous current rating is:

30mm x 5mm (1.26 x 0.20 Inches)

Auxiliary Contact Switching Capacities (Resistive Load):

5 Ampere at 24V DC

2 Ampere at 48V DC

0.5 Ampere at 240V DC

The thermal current ratings stated for the contactors are dependant upon the size of busbar being used for the required duty. For maximum continuous ratings, the busbars should not be less than the sizes stated above.

Please Note: All performance data provided should be used as a guide only. Some de-rating or variation from these figures may be necessary according to type and application.

Albright International Limited

125 Red Lion Road, Surbiton

Surrey KT6 7QS, England

Web Site: www.albrightinternational.com

Albright

INTERNATIONAL

Tel: +44 (0) 20 8390 5357

Fax: +44 (0) 20 8390 1927

E-mail: technical@albright.co.uk

sales@albright.co.uk